

Minimum fall 5° (inc roof) to allow water to run off
 Maximum fall 15° (inc roof)

IF INCLUDING BLACKOUT BLINDS

When blinds are selected, plaster up to blind trim

Black out blind option

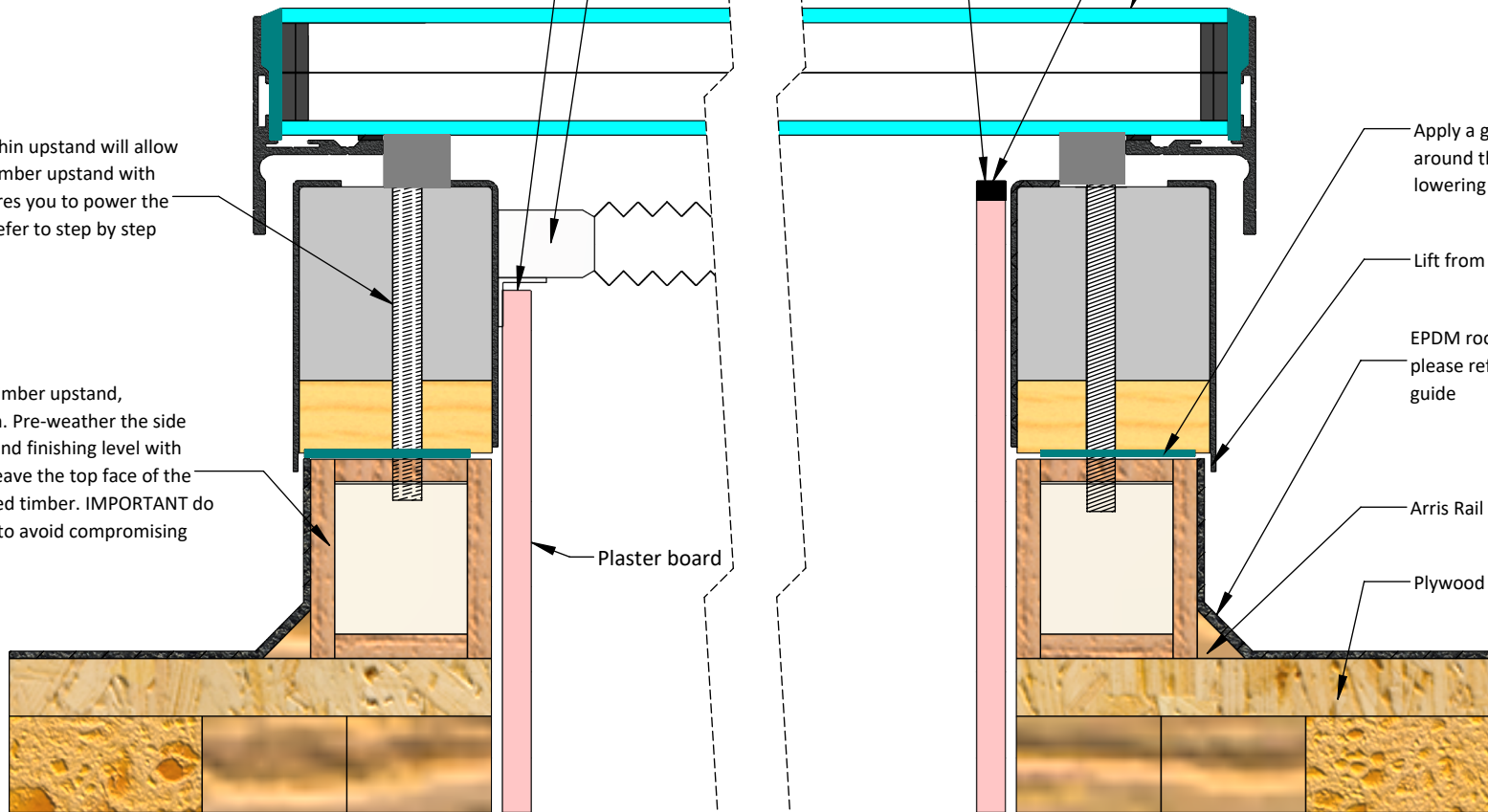
When no blind is selected, plaster stop bead to finish flush with the top of the inside profile (as illustrated)

Do not lift by glass

Stop bead

Pre-formed screw holes within upstand will allow you to fix the unit to your timber upstand with screws provided. This requires you to power the rooflight before opening - refer to step by step installation guide

Maximum 70mm width timber upstand, minimum height of 30mm. Pre-weather the side face of your timber upstand finishing level with the top (as illustrated). Leave the top face of the timber upstand as exposed timber. **IMPORTANT** do not exceed 70mm width to avoid compromising drip detail.



Internal sizes

taken from here

(size ordered = size of timber structural opening)

ROOF MAKER
 WORLD CLASS ROOFLIGHTS

ROOF-maker

1 Pinfold Road, Thurmaston
 Leicester, LE4 8AS
 Tel: 0116 269 6297
 Fax: 0116 269 6291
 Email: sales@roof-maker.co.uk

Title: TRIPLE GLAZED FLAT HINGED OPENING ROOFLIGHT - TYPICAL FITTING GUIDELINES - WARM DECK ROOF

THIS DRAWING IS FOR REFERENCE ONLY. PLEASE REPORT ANY DISCREPANCIES TO THE DESIGNER BEFORE ANY WORK COMMENCE. ALL DIMENSIONS ARE IN mm. ALL DIMENSIONS TO BE CHECKED ON SITE BEFORE ANY WORK COMMENCE.

Date: 12/01/2018

Drawn: CS

Checked: SM

Scale:

Approx. 1:3 @A4