

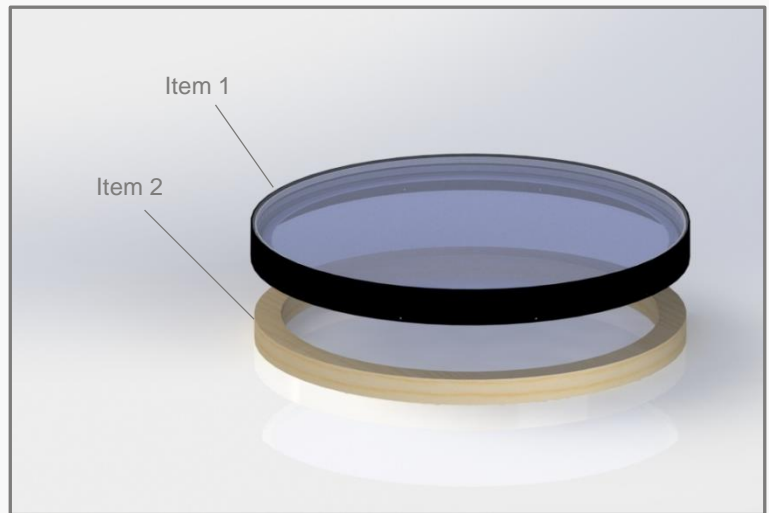
## O-Lite Assembly Instructions

### Introduction ... to your new O-Lite

On delivery of your new O-Lite, you will receive:

1. O-Lite Framed Glass Unit
2. O-Lite Timber Base

Please take precaution when moving heavy objects and working at height; be sure to use proper equipment.



### Assembly Procedure Guidance

Make sure to read through all steps and understand all requirements before beginning assembly.

In addition to your O-Lite, you will need:

- Silicone Adhesive Sealant
- (10x) Pan or Flathead Woodscrews plus caps; suggested size 4x30mm
- (minimum of 8x) Countersunk Head Woodscrews; suggested length 100mm.
- Materials to prepare an aperture on your roof

Guide Weights		
O-Lite Diameter (mm)	Glass Unit Weight (kg)	Timber Base Weight (kg)
750	35	4
1000	60	6
1500	130	10

## O-Lite Assembly Instructions

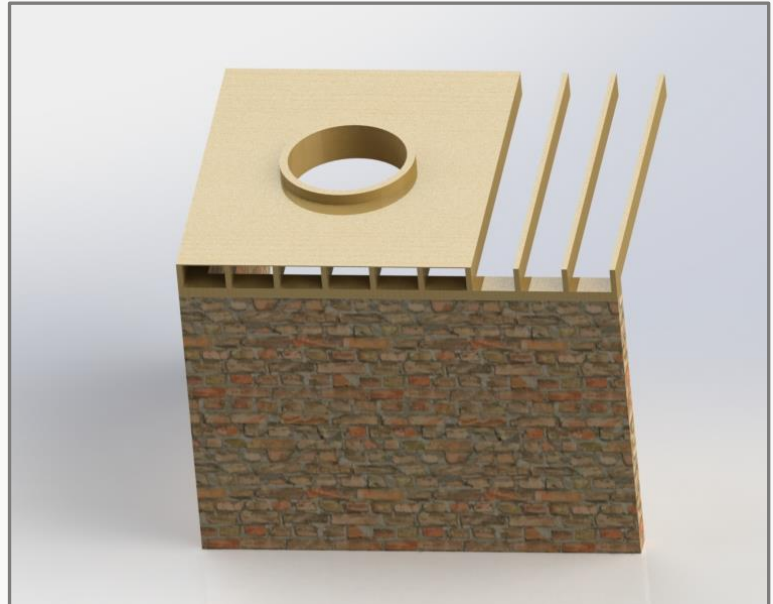
### Step One

#### Prepare an aperture for your O-Lite

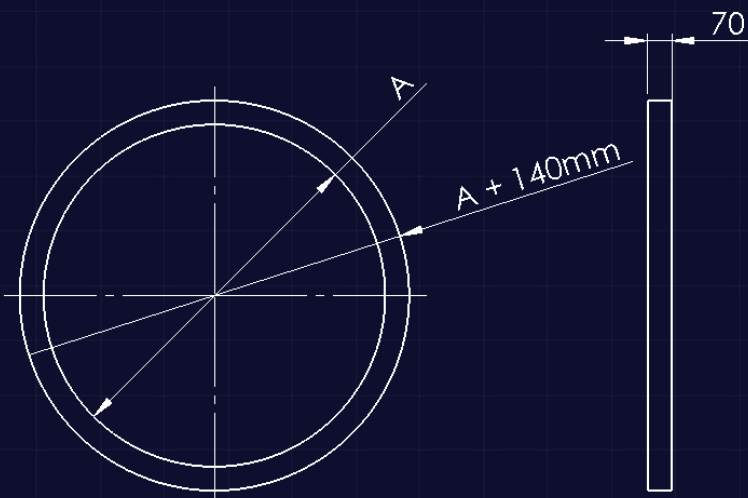
The dimensions of the prepared aperture should match the timber base of the O-Lite (see below for dimensions).

Keep in mind, in later steps, you may plasterboard the internal faces of the aperture and timber base.

It is required that the top face of the prepared aperture has a pitch of 5°, to prevent water pooling (see below).



Timber Base Dimensions



*Dimension A is equal to the diameter of your O-Lite  
(for a 1000mm O-Lite, A = 1000mm)*

Aperture Pitch



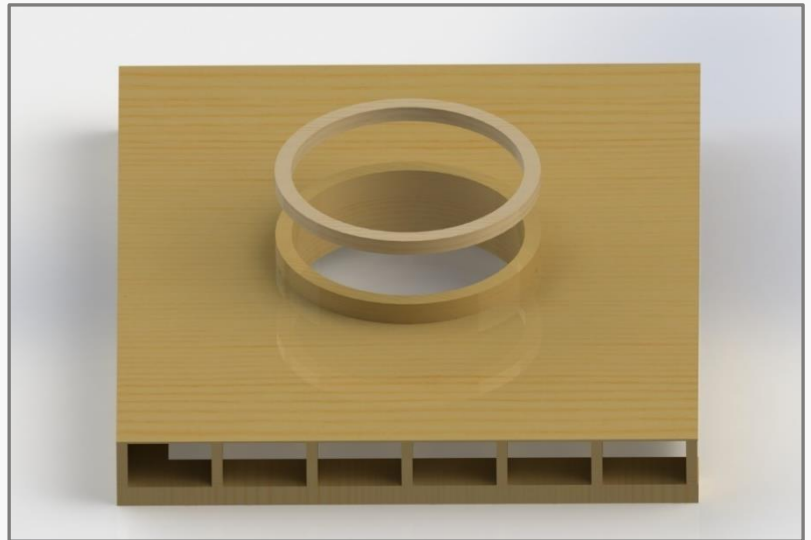
## O-Lite Assembly Instructions

### Step Two

Seal and fasten the O-Lite timber base to the aperture

Apply a bead of silicone around the top face of the aperture and press the O-Lite timber base in place on the aperture. *The silicone bead should be close to the outer circumference of the O-Lite timber base.*

The timber base can now be fastened to the aperture. *The screws should be located inside of the silicone sealant.*



### Step Three

Fit roof flashing to timber base

The waterproof membrane or flashing which your O-Lite is fitted to must be extended to the rim of the aperture.

This will provide waterproofing from the point the roof interfaces with the O-Lite.

## O-Lite Assembly Instructions

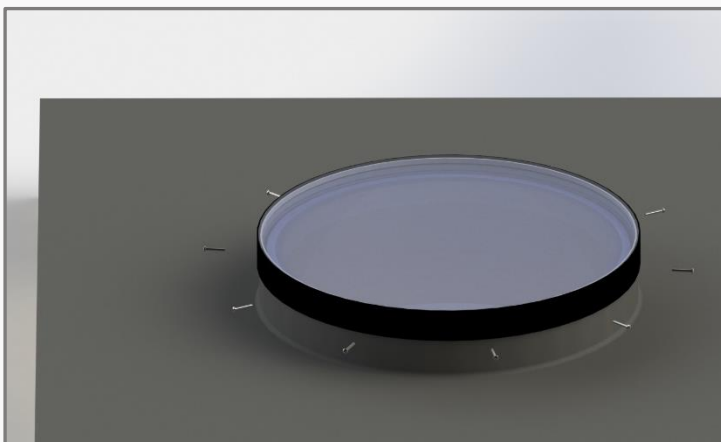
### Step Four

Seal the O-Lite framed glass unit against the timber base

Apply a bead of silicone around the top face of the timber base. *The silicone bead should be close to the outer circumference of the O-Lite timber base.*

Press the O-Lite framed glass unit in place onto the timber base.

Take precaution when moving heavy objects; use proper lifting equipment; refer to the guide weight table on page 1.



### Step Five

Fasten the O-Lite framed glass unit to the timber base

Fasten the O-Lite framed glass unit to the timber base through the clearance holes around the circumference of the aluminium frame.



## O-Lite Assembly Instructions

### Step Six Finishing your O-Lite assembly

You are now free to apply plasterboard to the interior of your aperture and O-Lite timber frame.

We recommend that you leave a 5mm gap between the plasterboard and the interior glass panel. Do not plasterboard up to the glass!

Congratulations! Your O-Lite is now fully installed.

