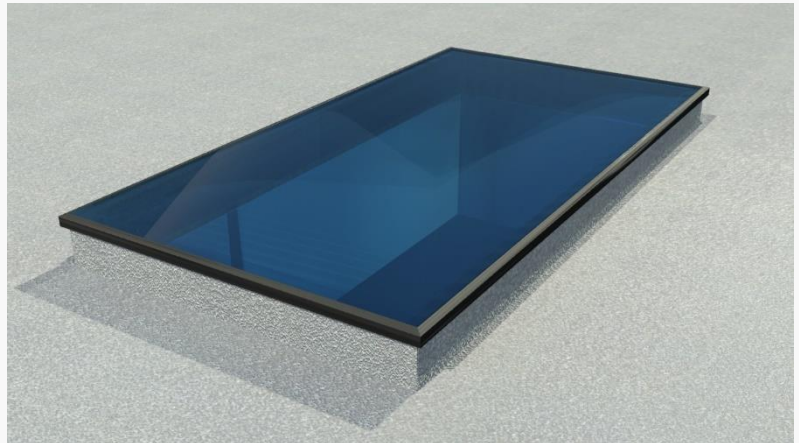


## Fixed Flat Rooflight Installation Instructions

### Introduction

... to your new Fixed Flat Rooflight

Thank you for choosing to purchase a ROOF Maker Fixed Flat Rooflight.



Guide Weights

Size (mm)	Weight (kg)
1000x1000	80
1000x1500	110
1000x2000	140
1000x2500	170
1200x1500	125
1200x2000	160
1400x1500	145
1400x2000	185
1200x2500	200
700x3000	155
1000x3000	205

### Assembly Procedure Guidance

Please take precaution when moving heavy objects and working at height; be sure to use proper equipment.

In addition to your Fixed Flat Rooflight you will need:

- Silicone Adhesive Sealant (high quality; Dow Corning 791 suggested)
- Drill, bits and screws as required
- Materials to prepare a timber upstand

Please make sure to read through all steps and understand all requirements before beginning installation.

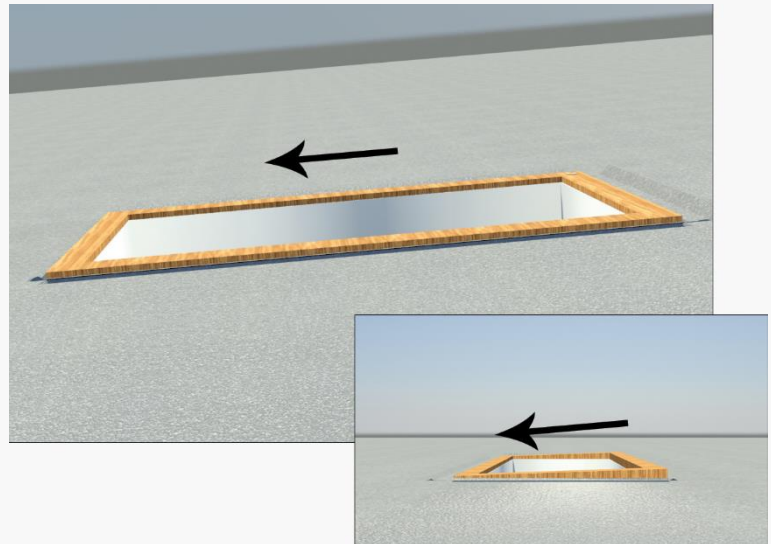
## Fixed Flat Rooflight Installation Instructions

### Step One

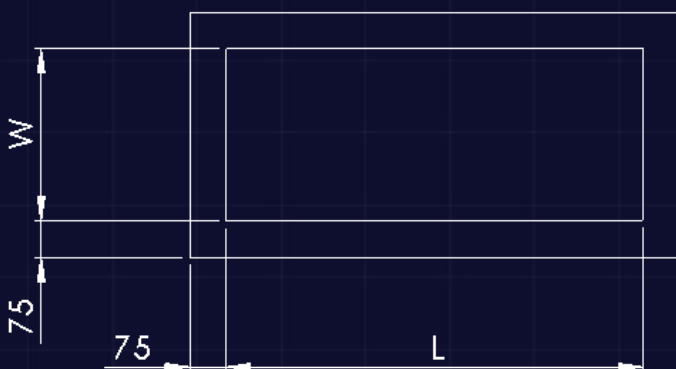
#### Prepare a timber upstand for your rooflight

Prepare a timber upstand for your rooflight. The required dimensions of the upstand are shown below.

Your fixed flat rooflight needs a slight pitch of 5° for rain to run off. If your roof does not have this pitch, build the angle into your upstand.



### Timber Upstand Dimensions (mm)



*Dimensions L and W are the length and width of your Fixed Flat Rooflight respectively. The internal dimensions are equal to the size ordered.*

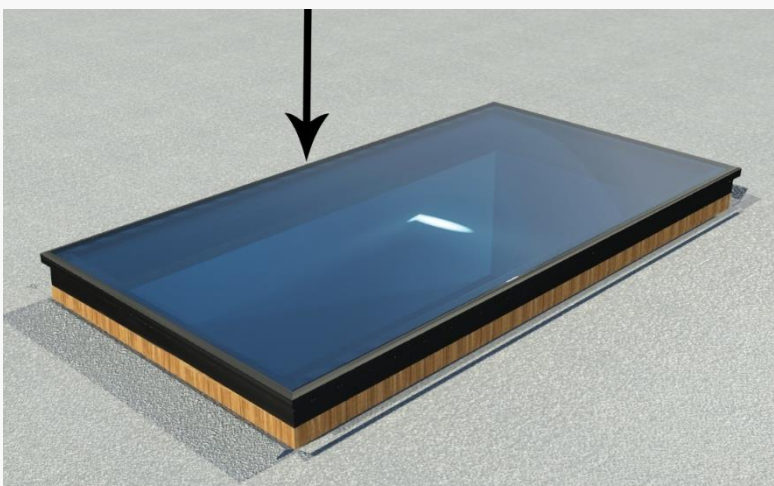
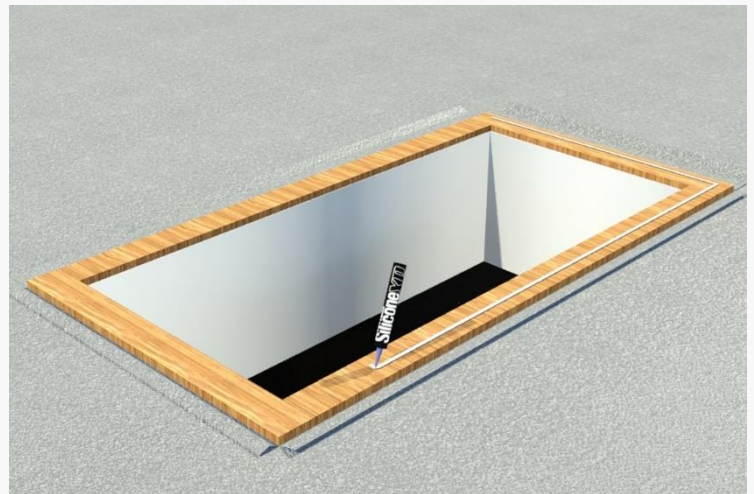


## Fixed Flat Rooflight Installation Instructions

### Step Two

#### Apply silicone to your upstand

Apply a bead of silicone around the top face of the upstand, as shown. The bead of silicone should be applied approximately 20mm from the internal edge.



### Step Three

#### Position your Fixed Flat Rooflight

Bring your Fixed Flat Rooflight into position. Align the rooflight so that it is centred on the aperture.

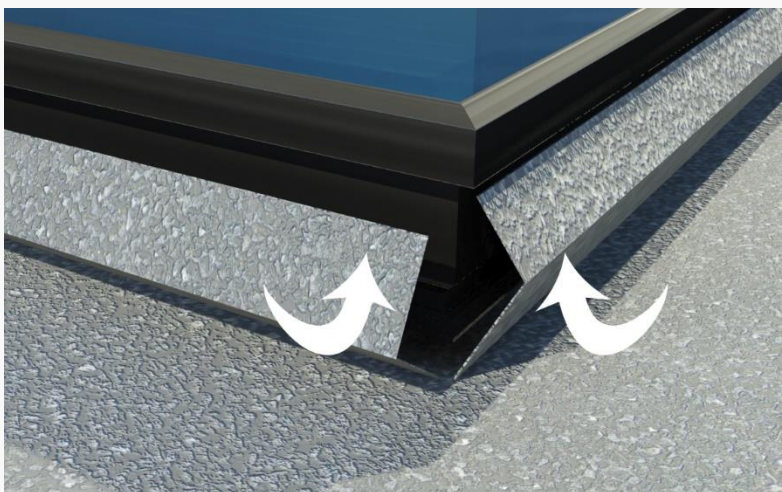
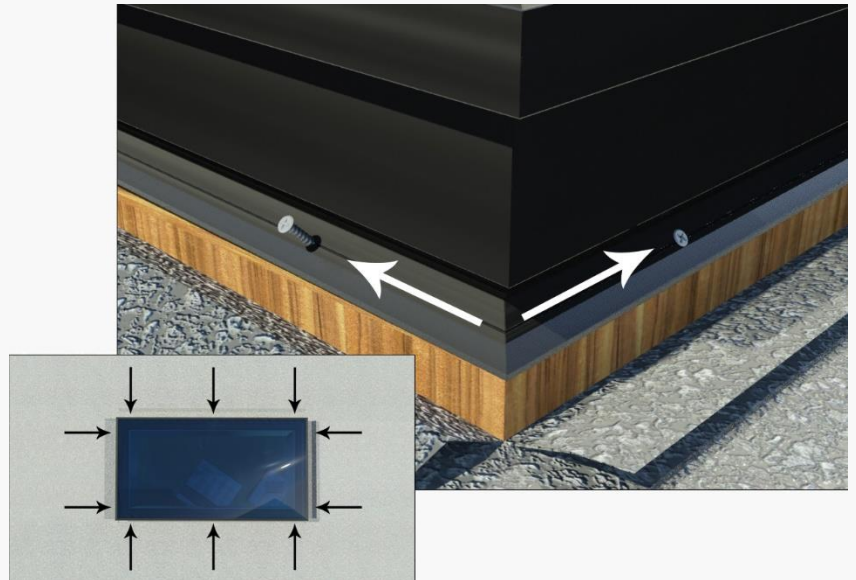


## Fixed Flat Rooflight Installation Instructions

### Step Four

#### Secure your rooflight to the upstand

Use the recess in the rooflight's kerb to position the screws. Drill a pilot hole appropriate for your chosen screw diameter, and fix the frame with screws in the indicated positions: 100mm from each corner, and in the centre of the long sides.



### Step Five

#### Seal the unit with your roof's flashing

Apply silicone around the roof's kerb. Seal your roof's flashing to the kerb to finish the assembly of your rooflight.

Congratulations! Your Fixed Flat Rooflight is now complete.