



## Hinged Opening LUXLITE® (Landscape) Installation Instructions

### Introduction

... to your new LUXLITE®

Thank you for choosing to purchase a ROOF Maker LUXLITE®. Please follow these steps to complete your installation.



### Assembly Procedure Guidance

Make sure to read through all steps and understand all requirements before beginning assembly.

In addition to your LUXLITE® you will need:

- Silicone Adhesive Sealant (high quality; Dow Corning 791 suggested)
- Drill, bits and screws as required
- Materials to prepare a timber frame

Please take precaution when moving heavy objects and working at height; be sure to use proper equipment.

Guide Weights	
Size (mm)	Weight (kg)
1000x1000	110
1000x1500	150
1000x2000	190

Many more sizes are available, visit  
[roof-maker.co.uk/rooflights/luxlite-pitched-rooflights/](http://roof-maker.co.uk/rooflights/luxlite-pitched-rooflights/)



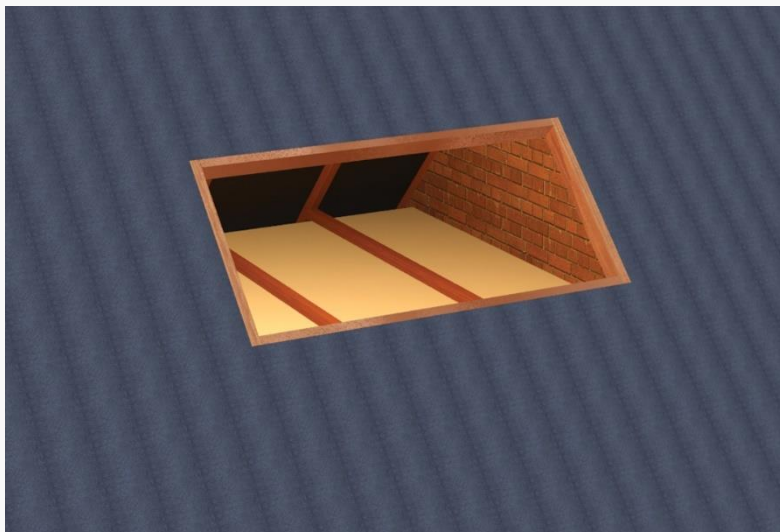
## Hinged Opening LUXLITE® (Landscape) Installation Instructions

### Step One

#### Fit trimmers to your joists

The internal dimensions of the aperture created by your trimmers and joists should be 130mm wider than the LUXLITE® you ordered. (e.g. for 2000x1000mm LUXLITE®, the internal dimensions of your aperture should be 2130x1130mm). See the appendix for more detail.

Fit trimmers across the joists adjacent to the aperture, and a beam across the trimmers, as shown. These additional structural members will support the tile battens around the rooflight.



### Step Two

#### Fit flashing to your roof

Fit flashing to your roof. The flashing should extend to the rim of the aperture where your LUXLITE® will be installed. Seal the flashing to the timber around the aperture.

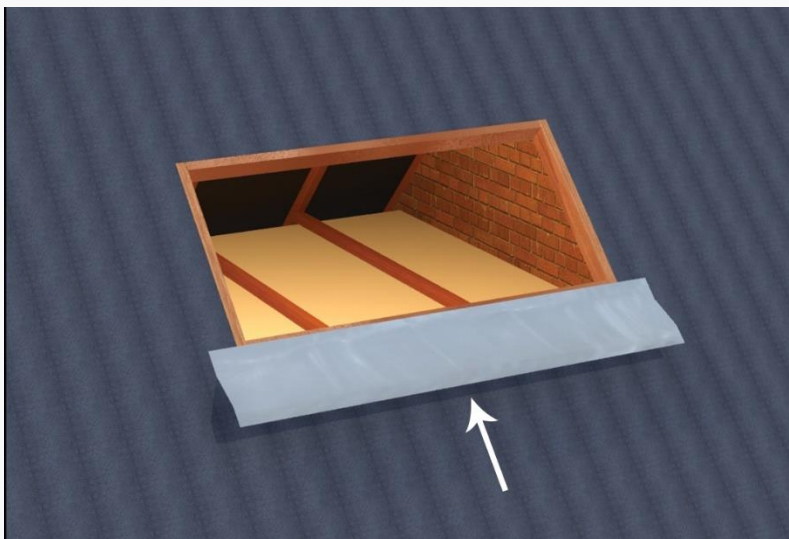


## Hinged Opening LUXLITE® (Landscape) Installation Instructions

### Step Three

Prepare and fit a wedge  
below your aperture

The bottom of the wedge should meet level with the tiles that will be installed later. This can be determined by trial fitting the LUXLITE® assembly.



### Step Four

Cover the wedge with  
flashing

Cover the wedge installed in the previous step with flashing (flashing and wedge not provided).



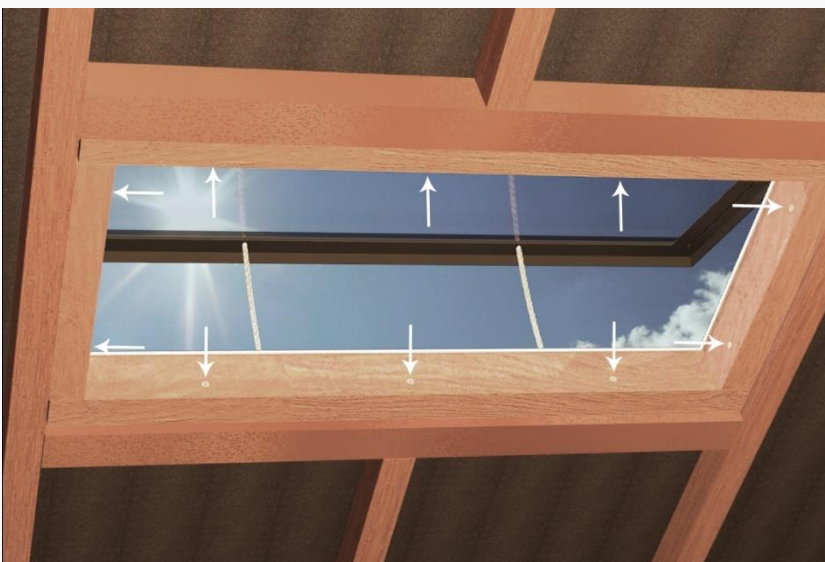
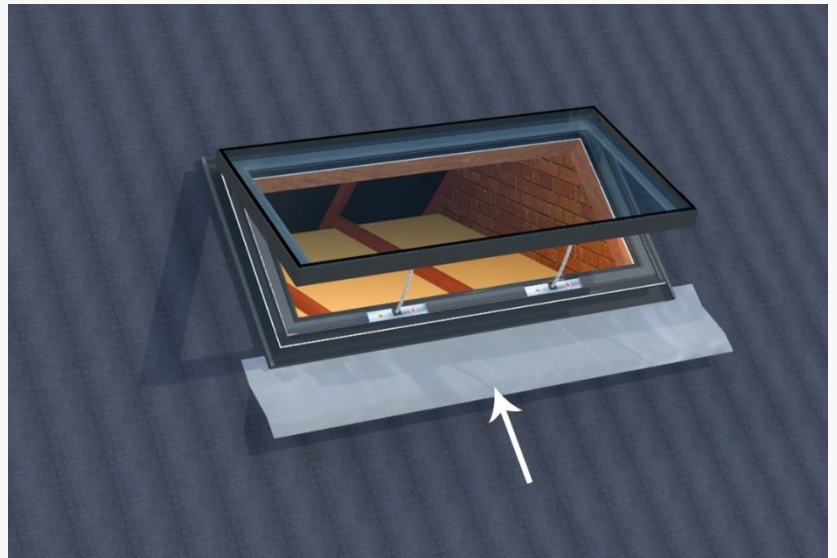
## Hinged Opening LUXLITE® (Landscape) Installation Instructions

### Step Five

#### Bring your LUXLITE® into position

Bring your LUXLITE® into position and align it so that it is centred on your aperture.

Seal the interface between the LUXLITE® and the aperture with silicone.



### Step Six

#### Fix your LUXLITE® to your roof

Fix your LUXLITE® to your roof. Refer to the assembly section view in the appendix at the end of this document for more detail.



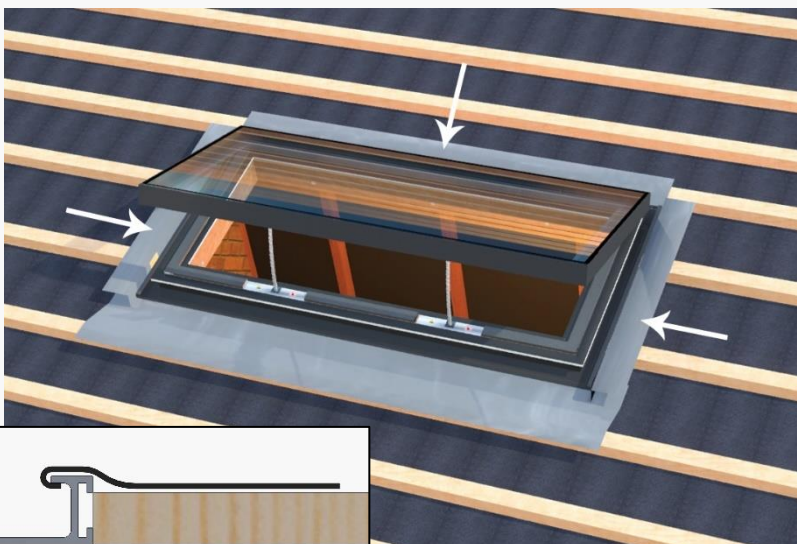


## Hinged Opening LUXLITE® (Landscape) Installation Instructions

### Step Seven

#### Fit tile battens to your roof

Tile battens can now be fitted to your roof. The battens should be flush with the edge of the LUXLITE® aluminium apron.



### Step Eight

#### Fit flashing to cover the battens

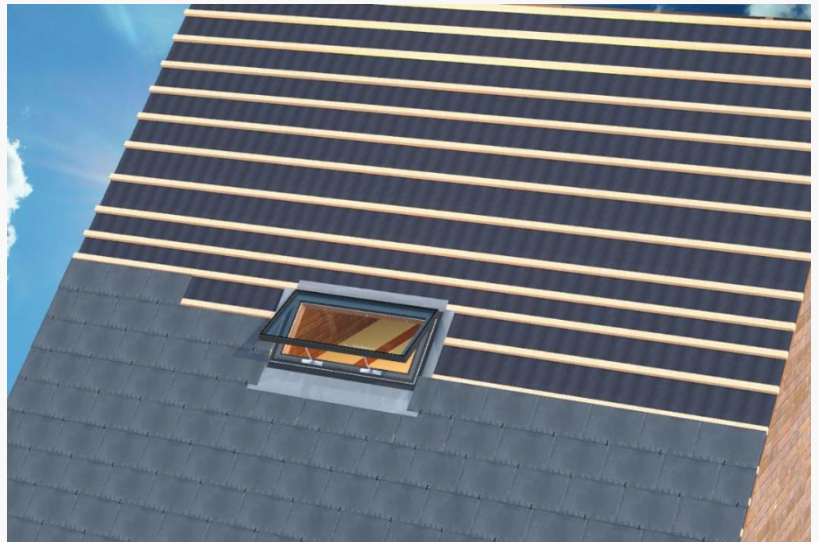
Seal beneath the lip of the apron, drape over battens. Tiles will sit over this flashing.



## Hinged Opening LUXLITE® (Landscape) Installation Instructions

### Step Nine Fit tiles to your roof

You are now free to fit tiles to your roof. The LUXLITE® has been designed so that your roof tiles can overlap the apron, leaving little aluminium exposed for a minimalistic aesthetic.



### Step Ten Plasterboard to finish your LUXLITE® assembly

Apply plasterboard to the internal faces of your aperture. The plasterboard (and plasterboard stop bead) can be applied close to the internal glass panel of the LUXLITE®. Leave at least a 5mm gap – do not let the plasterboard touch the glass.

Congratulations! Your LUXLITE® is now fully installed.

## Hinged Opening LUXLITE® (Landscape) Appendix – Assembly Section View

