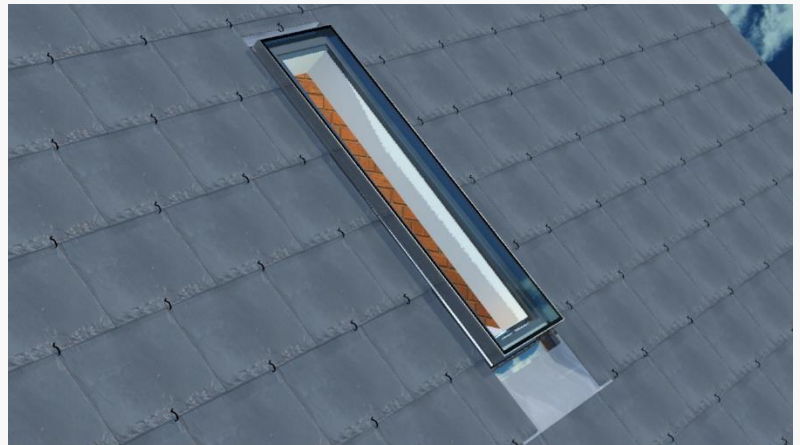


Hinged Opening LUXLITE® (Portrait) Installation Instructions

Introduction

... to your new LUXLITE®

Thank you for choosing to purchase a ROOF Maker LUXLITE®. Please follow these steps to complete your installation.



Assembly Procedure Guidance

Make sure to read through all steps and understand all requirements before beginning assembly.

In addition to your LUXLITE® you will need:

- Silicone Adhesive Sealant (high quality; Dow Corning 791 suggested)
- Drill, bits and screws as required

Please take precaution when moving heavy objects and working at height; be sure to use proper equipment.

| Guide Weights | |
|---------------|-------------|
| Size (mm) | Weight (kg) |
| 1000x1000 | 110 |
| 1000x1500 | 150 |
| 1000x2000 | 190 |

Many more sizes are available, visit roof-maker.co.uk/rooflights/luxlite-pitched-rooflights/

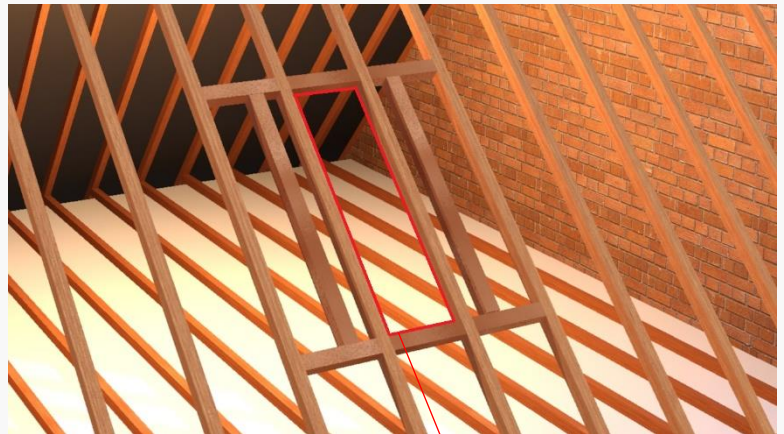
Hinged Opening LUXLITE® (Portrait) Installation Instructions

Step One

Fit trimmers to your joists

The internal dimensions of the aperture created by your trimmers and joists should be 130mm wider than the LUXLITE® you ordered. (e.g. for 2000x1000mm LUXLITE®, the internal dimensions of your aperture should be 2130x1130mm). See the appendix for more detail.

Fit trimmers across the joists adjacent to the aperture, and a beam across the trimmers, as shown. These additional structural members will support the tile battens around the rooflight.



Internal aperture



Step Two

Fit flashing to your roof

Fit flashing to your roof. The flashing should extend to the rim of the aperture where your LUXLITE® will be installed. Seal the flashing to the timber around the aperture.

Hinged Opening LUXLITE® (Portrait) Installation Instructions

Step Three

Prepare and fit a wedge
below your aperture

The bottom of the wedge should meet level with the tiles that will be installed later. This can be determined by trial fitting the LUXLITE® assembly.



Step Four

Cover the wedge with
flashing

Cover the wedge installed in the previous step with flashing (flashing and wedge not provided).

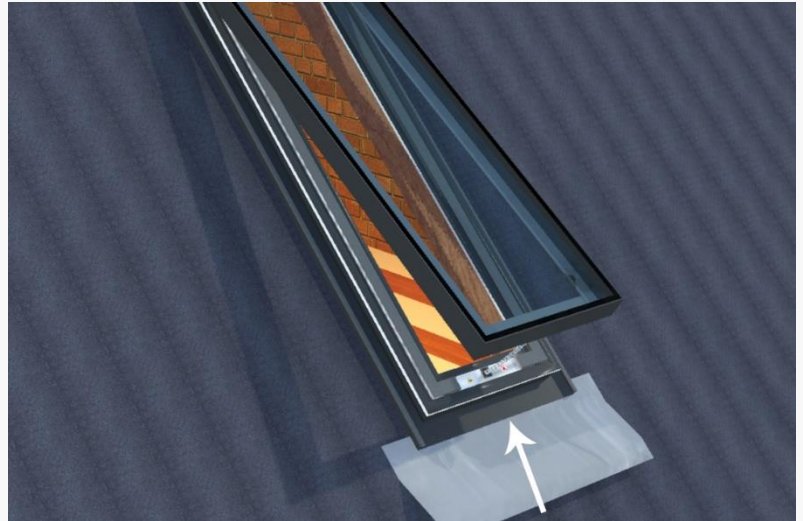
Hinged Opening LUXLITE® (Portrait) Installation Instructions

Step Five

Bring your LUXLITE® into position

Bring your LUXLITE® into position and align it so that it is centred on your aperture.

Seal the interface between the LUXLITE® and the aperture with silicone.



Step Six

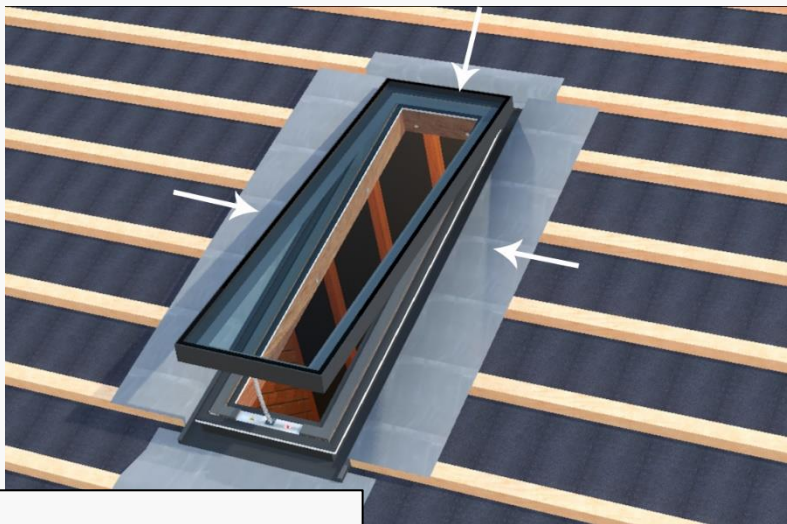
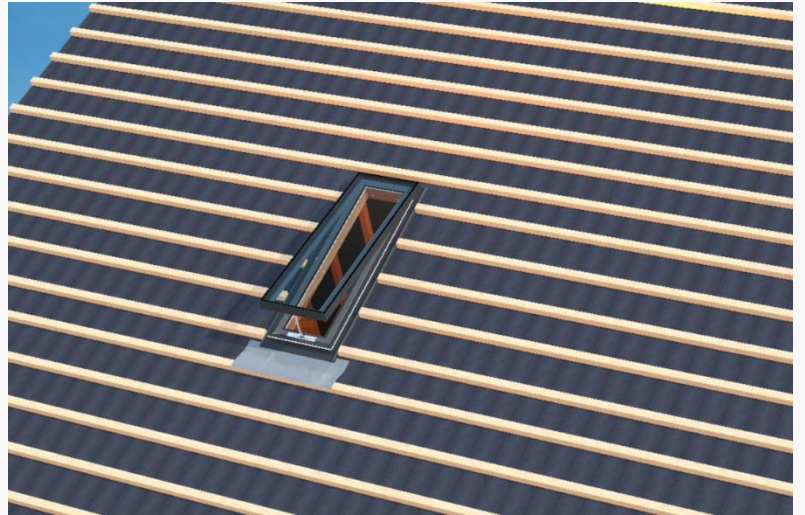
Fix your LUXLITE® to your roof

Fix your LUXLITE® to your roof. Refer to the assembly section view in the appendix at the end of this document for more detail.

Hinged Opening LUXLITE® (Portrait) Installation Instructions

Step Seven Fit tile battens to your roof

Tile battens can now be fitted to your roof. The battens should be flush with the edge of the LUXLITE® aluminium apron.



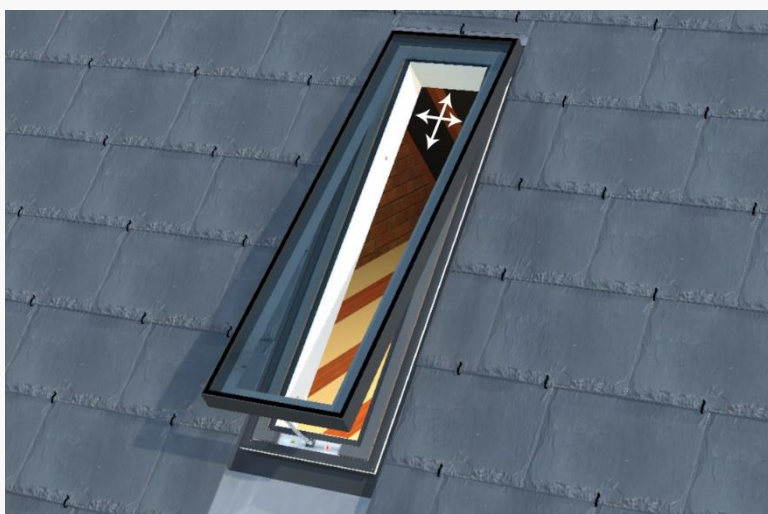
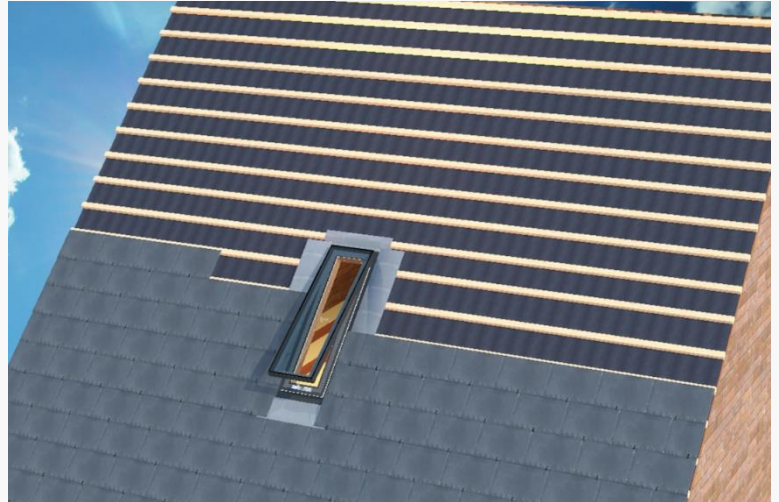
Step Eight Fit flashing to cover the battens

Seal beneath the lip of the apron, drape over battens. Tiles will sit over this flashing.

Hinged Opening LUXLITE® (Portrait) Installation Instructions

Step Nine Fit tiles to your roof

You are now free to fit tiles to your roof. The LUXLITE® has been designed so that your roof tiles can overlap the apron, leaving little aluminium exposed for a minimalistic aesthetic.



Step Ten Plasterboard to finish your LUXLITE® assembly

Apply plasterboard to the internal faces of your aperture. The plasterboard (and plasterboard stop bead) can be applied close to the internal glass panel of the LUXLITE®. Leave at least a 5mm gap – do not let the plasterboard touch the glass.

Congratulations! Your LUXLITE® is now fully installed.

Hinged Opening LUXLITE® (Portrait) Appendix – Assembly Section View

