

ROOF MAKER

WORLD CLASS ROOFLIGHTS



PRODUCT SPECIFICATION AND INSTALLATION GUIDE

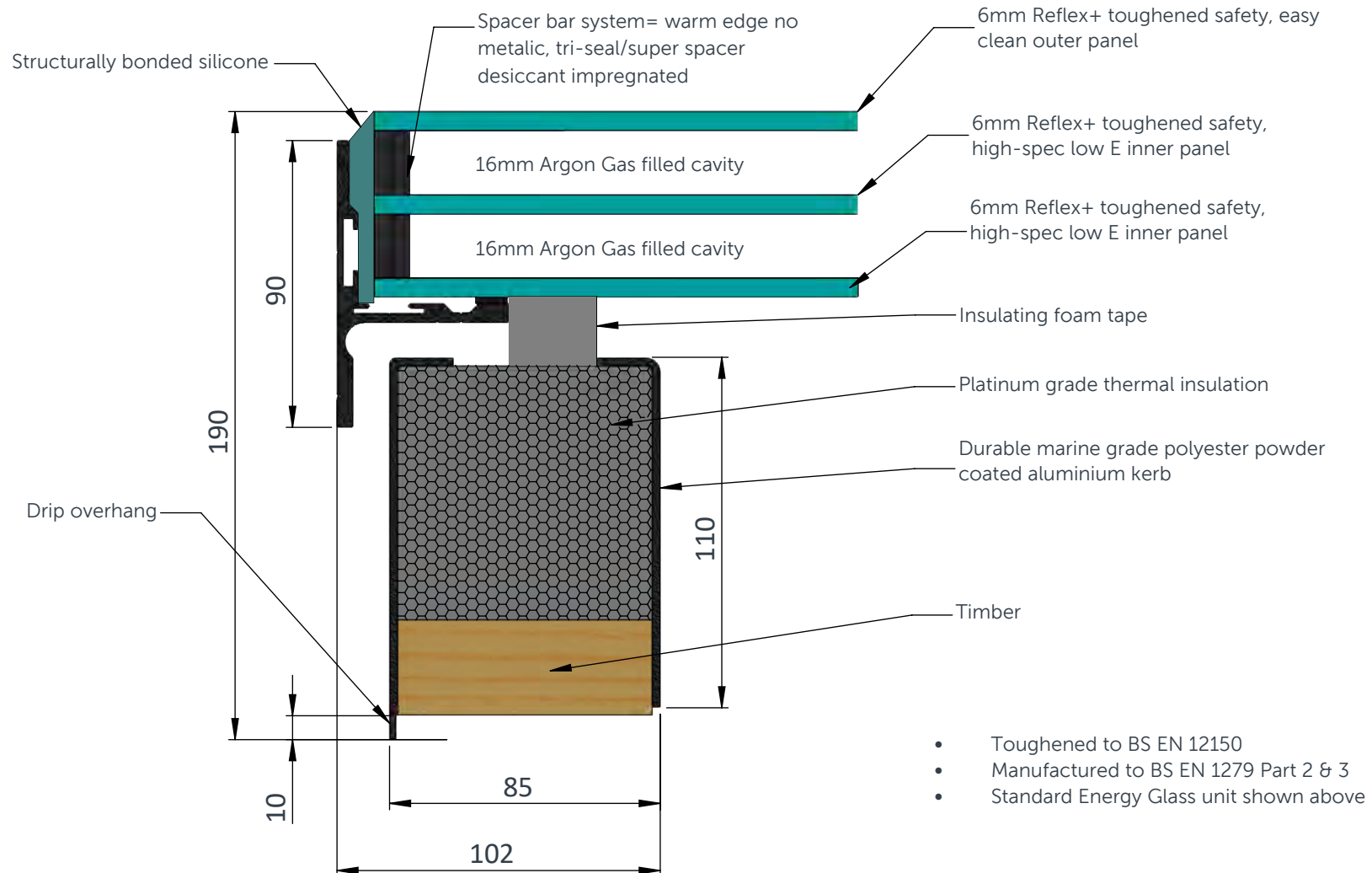
HINGED OPENING FLAT ROOFLIGHT

ROOF MAKER

WORLD CLASS ROOFLIGHTS

Call us: 0116 269 6297
Mon-Fri 9-5pm

HINGED OPENING FLAT ROOFLIGHT: STANDARD PRODUCT SPECIFICATION

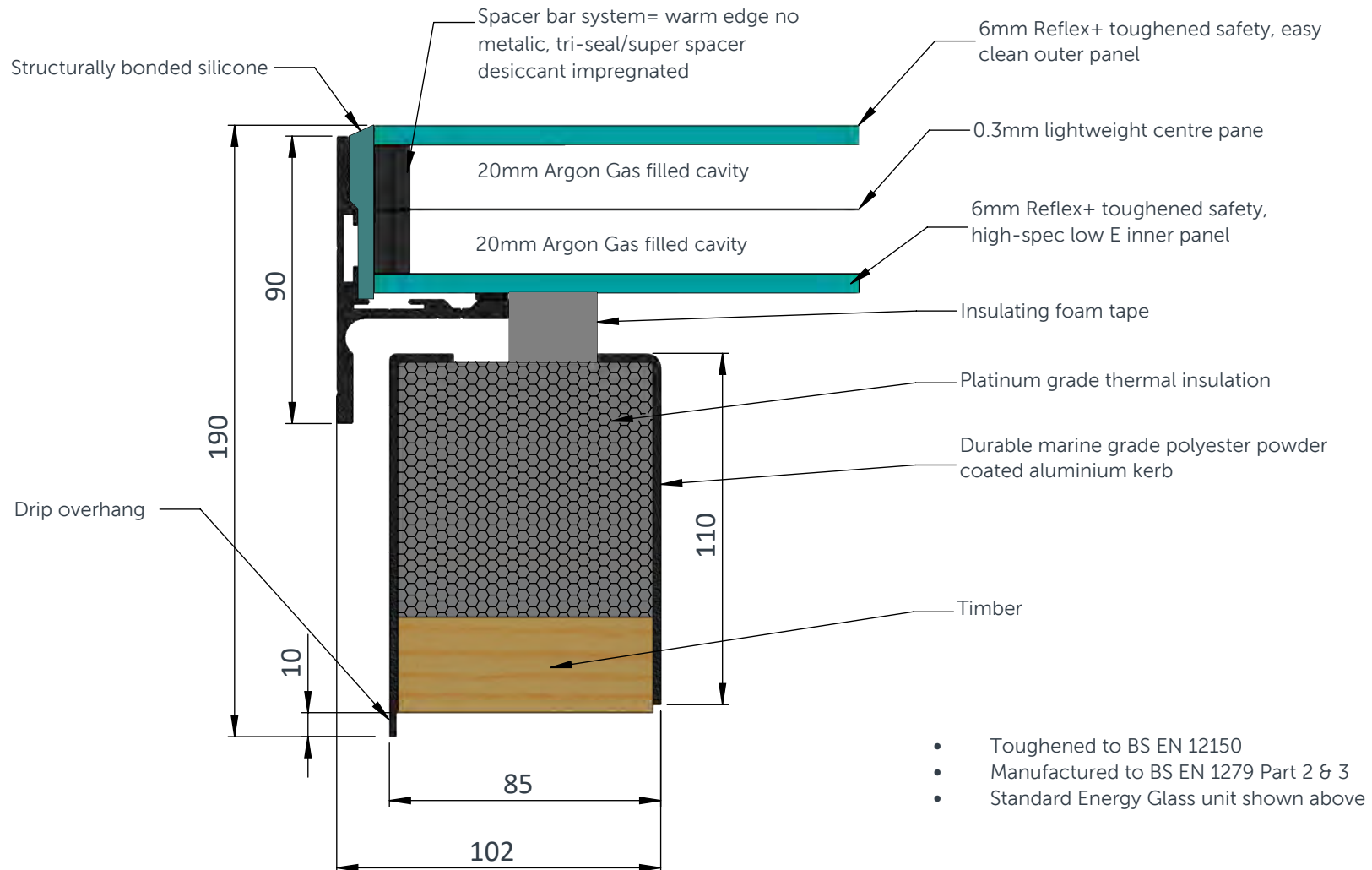


ROOF MAKER

WORLD CLASS ROOFLIGHTS

Call us: 0116 269 6297
Mon-Fri 9-5pm

HINGED OPENING FLAT ROOFLIGHT: PRODUCT SPECIFICATION (LARGER ROOFLIGHTS WITH LIGHTWEIGHT GLAZING UNIT)



ROOF MAKER

WORLD CLASS ROOFLIGHTS

Call us: 0116 269 6297
Mon-Fri 9-5pm

HINGED OPENING FLAT ROOFLIGHT: INSTALLATION GUIDE

ON DELIVERY OF YOUR NEW HINGED OPENING FLAT ROOFLIGHT, IN ADDITION YOU WILL RECEIVE;

**IF REMOTE CONTROLLED WITH A RAIN SENSOR...*

- Control box with 3 pin power flex
- Remote control and key fob remote
- Long Screws for fixing the rooflight to the timber kerb (come in cardboard box)

The Rain sensor comes pre-mounted to the rooflight as mentioned in the guide

**IF ROCKER SWITCH CONTROLLED...*

- Rocker switch
- Long Screws for fixing the rooflight to the timber kerb (come in cardboard box)

**All additional accessories and components will come with your rooflight delivery and be packaged in a cardboard box.*

IN ADDITION TO YOUR NEW HINGED OPENING FLAT ROOFLIGHT, YOU WILL NEED;

- Silicone Adhesive Sealant (high quality; Dow Corning 791 recommended)
- Drill, bits and screws as required
- Materials to prepare a timber kerb

INSTALLATION GUIDE

Make sure to read through all steps and understand all requirements before beginning assembly. We also recommend that you study the 'cable location guide' which provides further guidance on how to run the rooflight cabling into the property as part of the installation. This is located at the end of this guide, alongside the wiring guide and a roof section diagram.



Please take precaution when moving heavy objects and working at height. Be sure to use the correct equipment. Guide weights based on size, are shown on the chart below.

GUIDE WEIGHTS	
Size (mm)	Weight (kg)
1000 x 1000	95
1500 x 1000	130
2000 x 1000	164
1500 x 1500	176

ROOF MAKER

WORLD CLASS ROOFLIGHTS

Call us: 0116 269 6297

Mon-Fri 9-5pm

STEP ONE

PREPARE A TIMBER KERB FOR YOUR ROOFLIGHT

Prepare a 70mm width timber kerb for your rooflight. This should be a minimum of 30mm in height from the finished roof level (at the lowest side). The internal dimensions of your kerb should match the internal dimensions of the rooflight/size ordered.

SETTING THE DIRECTION OF THE FALL

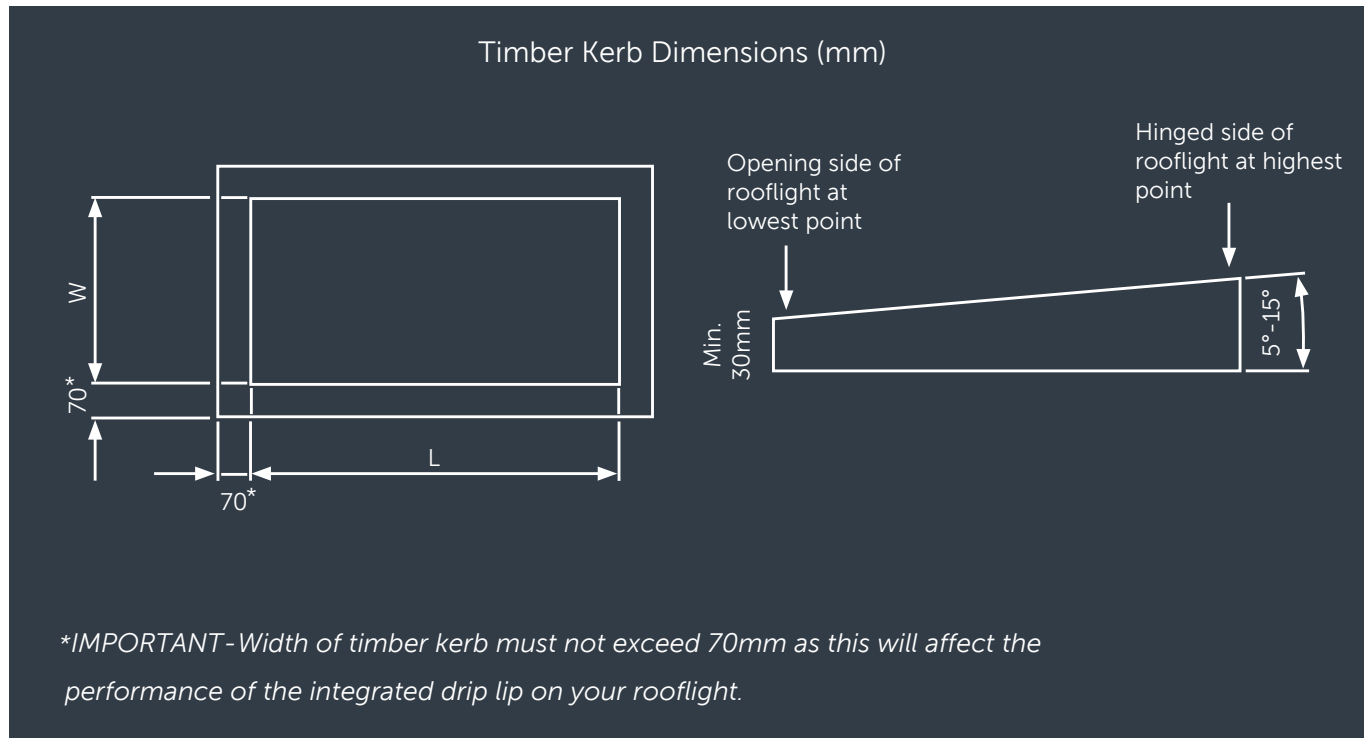
The rooflight always opens across the 'width' of the rooflight, so the hinges and motors will always be located on the longer sides of the rooflight, which are the sides that should be set 'level.'



Your hinged opening rooflight needs to be pitched between 5°-15° for rain to run off. If your roof does not have this pitch, build the angle into your kerb.

IMPORTANT - You will also need to ensure that the hinged side of your rooflight is located at the highest side of the timber Kerb, with the opening side being located at the lowest side of the timber kerb. For remote controlled rooflights, the rain sensor will be located on the opening side.

It is also important that the hinged side of the rooflight and the side that opens (rain sensor side) are set 'level,' with the sides that are pitched between 5°-15° running between these 2 sides.



ROOF MAKER

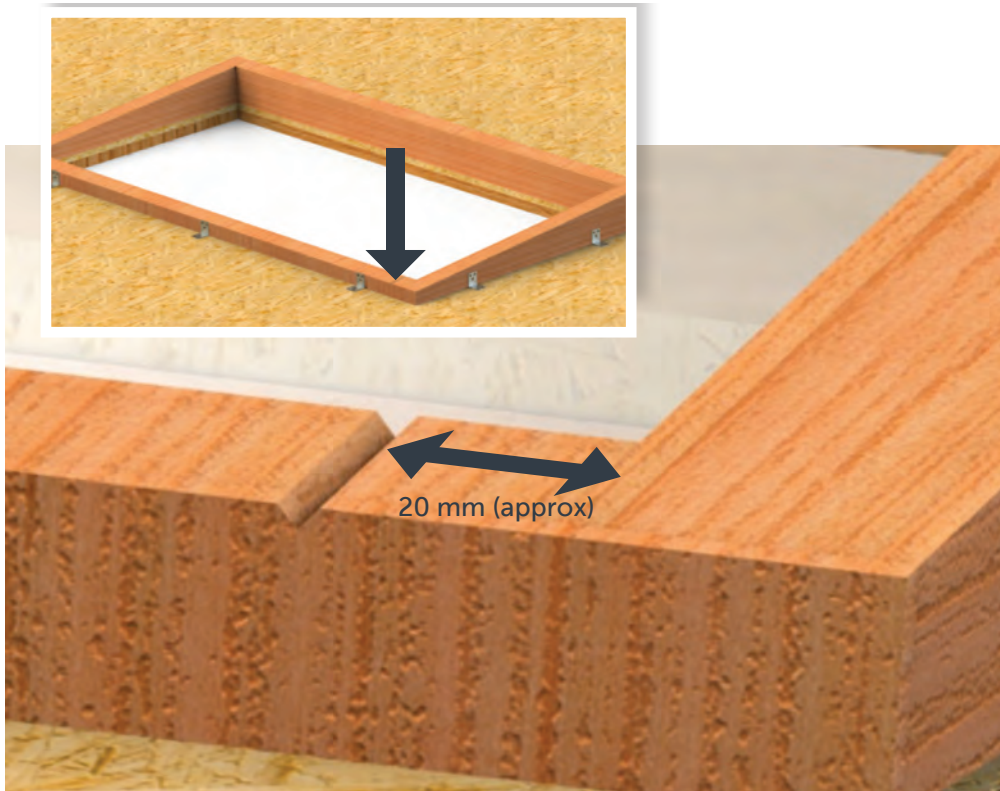
WORLD CLASS ROOFLIGHTS

Call us: 0116 269 6297
Mon-Fri 9-5pm

STEP TWO

RAIN SENSOR (FOR REMOTE CONTROLLED/RAIN SENSOR ROOFLIGHTS ONLY)

It is advised that a small groove/notch (5mm max depth) is cut into your kerb in line with where the rain sensor will be positioned. This will allow you to run the wire through for your rain sensor. *The rain sensor is always located at the right hand side as the below diagram shows.*

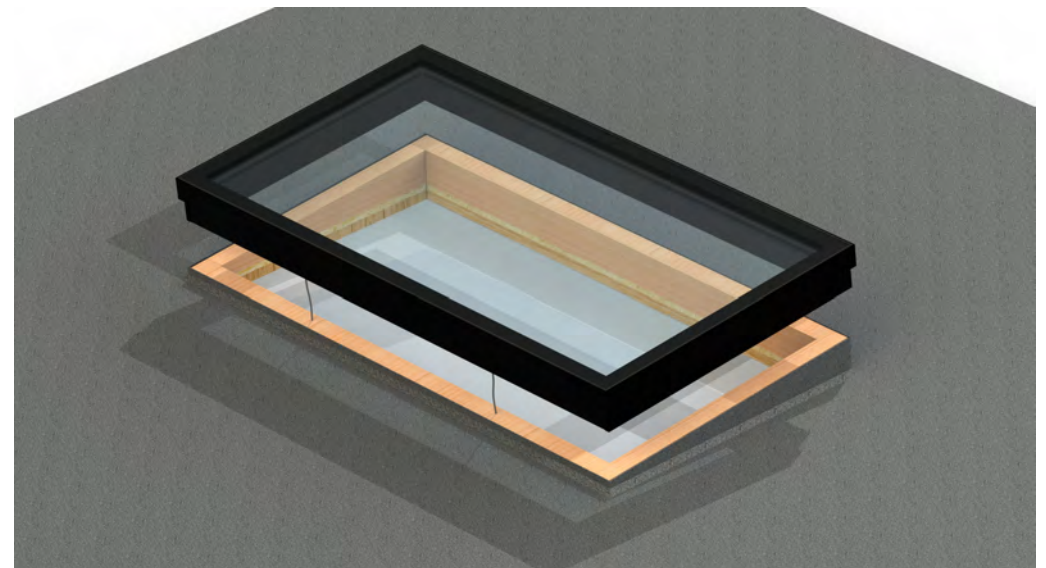


STEP THREE

CREATE HOLES/GROOVES IN THE TIMBER KERB TO RUN THE ROOFLIGHT CABLING INTO THE PROPERTY

Trial fit your rooflight and mark a suitable location to drill a hole/s or create notches for the rooflight's actuator cables - *Please refer to the cable location guide located on page 7 of this document, if you have opted for the remote controlled/rain sensor option. This gives advice as to where we recommend the control box can be located within the property.*

You do not need to refer to this guide if you have a rocker switch controlled rooflight. For switch controlled rooflights, you will just be extending the actuator cable/s to your chosen location of the rocker switch in the room below.



ROOF MAKER

WORLD CLASS ROOFLIGHTS

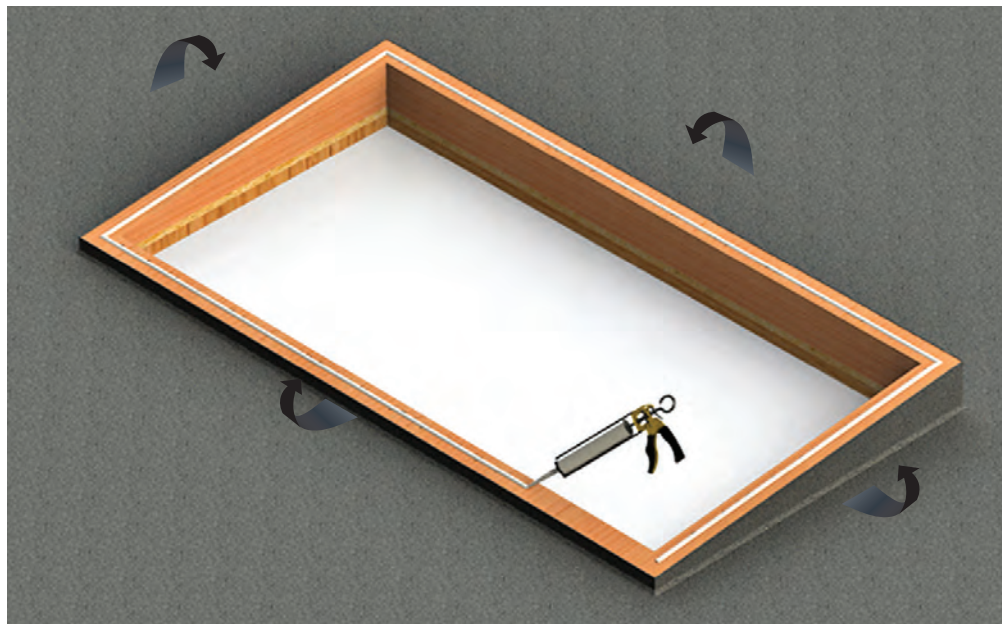
Call us: 0116 269 6297
Mon-Fri 9-5pm

STEP FOUR

APPLY SILICONE AROUND THE TOP FACE OF THE TIMBER KERB

Apply the flashing/roof membrane to the sides of the kerb (Leaving the top face as exposed timber) and apply a thick bead of silicone around the top face, closer to the outside edge of the kerb.

You can now place the rooflight onto the kerb and connect it to the power supply, ready to open the rooflight and fix it with the provided long screws. The wiring guides for both rocker switch and remote controlled variations, can be found at the end of this document.



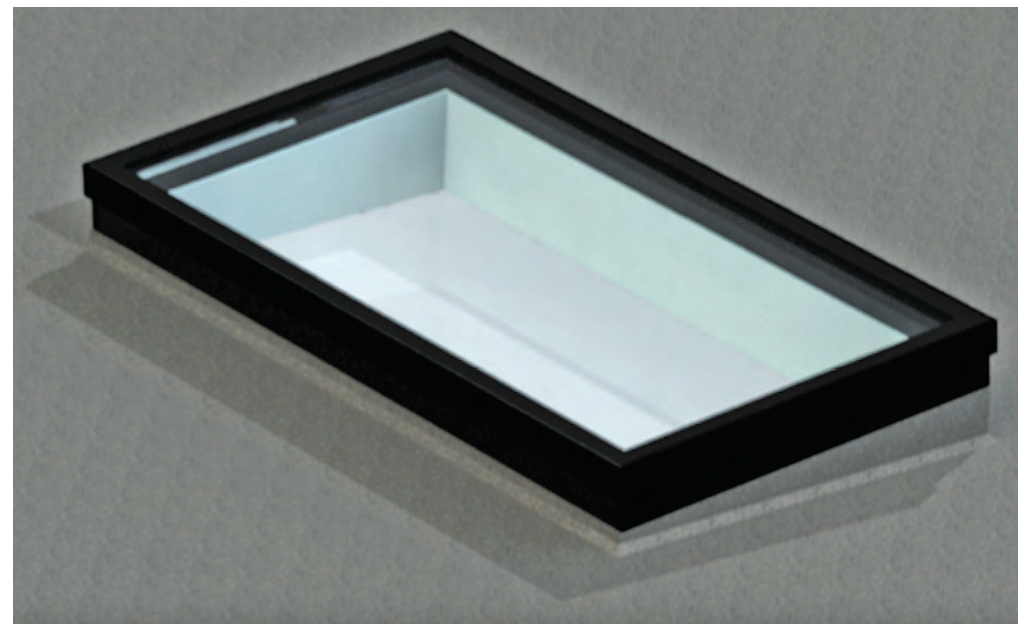
STEP FIVE

SCREW FIX THE ROOFLIGHT TO THE TIMBER KERB

Open the rooflight via the remote control/rocker switch and secure it to your kerb through the preformed holes in the top of the rooflight's base frame with the long screws*. For plastering finish guidelines, please follow the roof section fitting guide, on page 8 of this document.

Your Hinged Opening Flat Rooflight is now fully installed.

***Wiring guides for both remote controlled and rocker switch controlled rooflights can be found on pages 9-12.**



ROOF MAKER

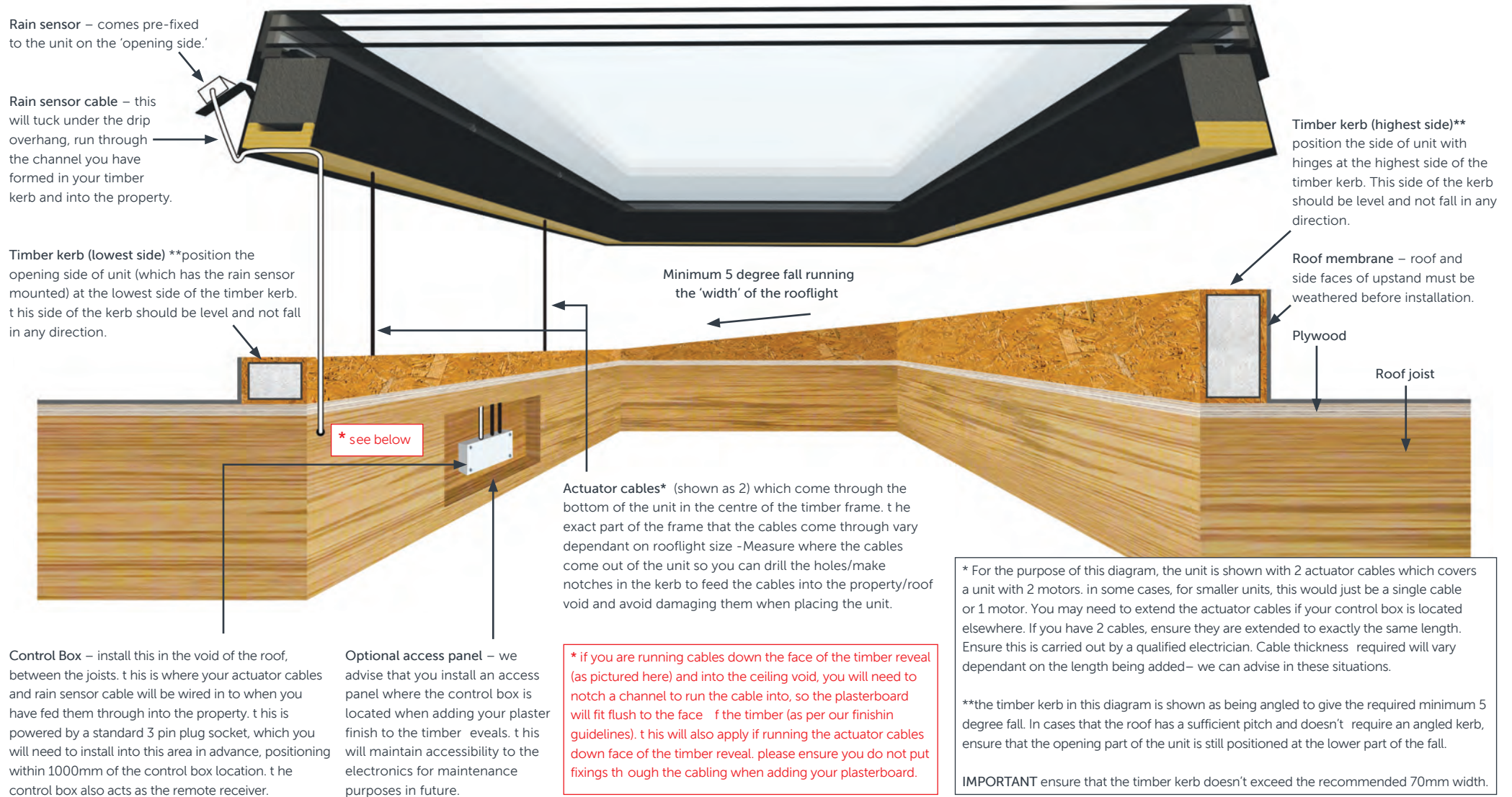
WORLD CLASS ROOFLIGHTS

Call us: 0116 269 6297

Mon-Fri 9-5pm

HINGED OPENING FLAT ROOFLIGHT - CABLE LOCATION GUIDELINES (not to scale)

(REMOTE CONTROLLED ROOFLIGHTS WITH RAIN SENSOR)



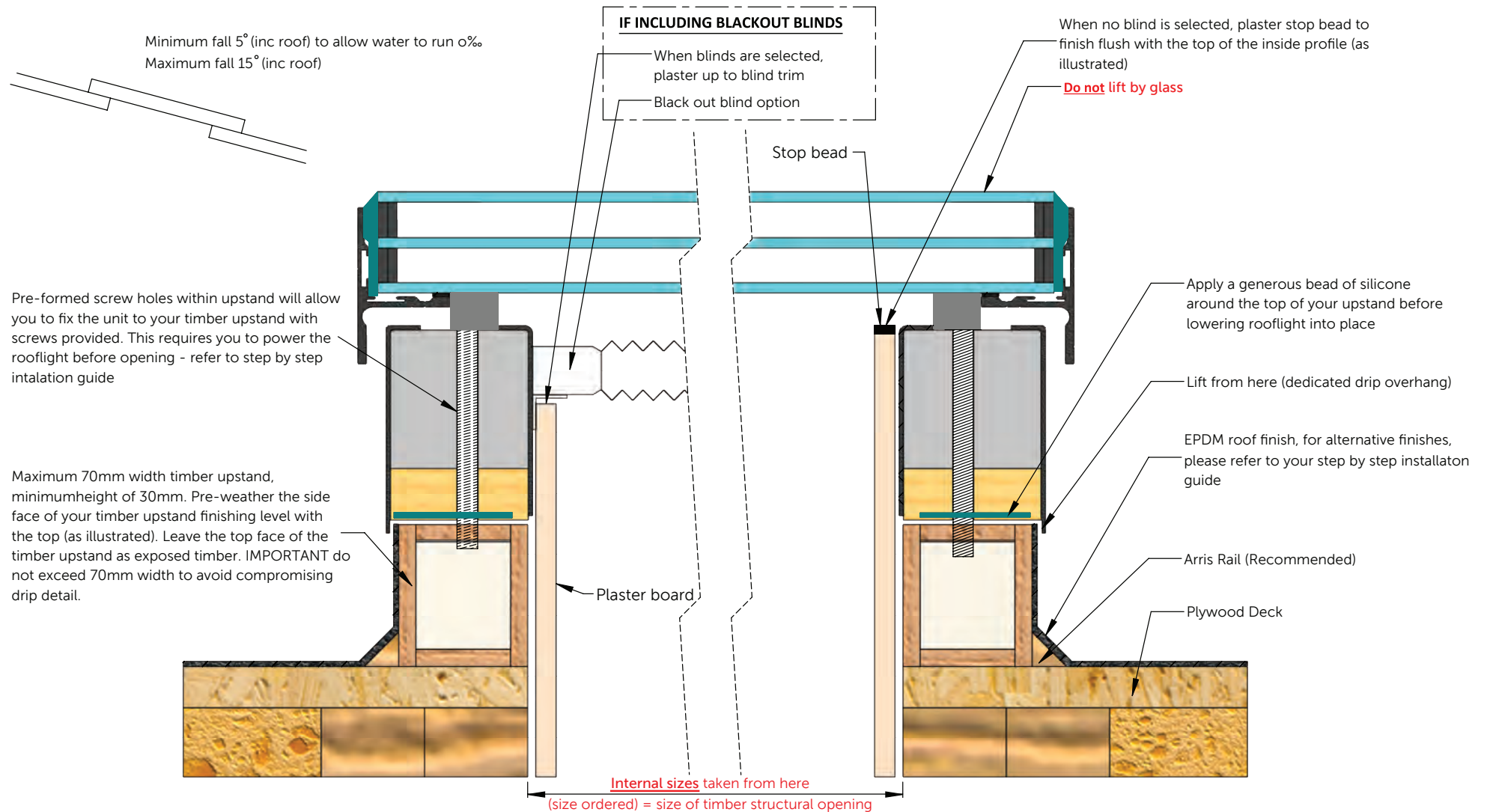
ROOF MAKER

WORLD CLASS ROOFLIGHTS

Call us: 0116 269 6297

Mon-Fri 9-5pm

ROOF SECTION FITTING GUIDE

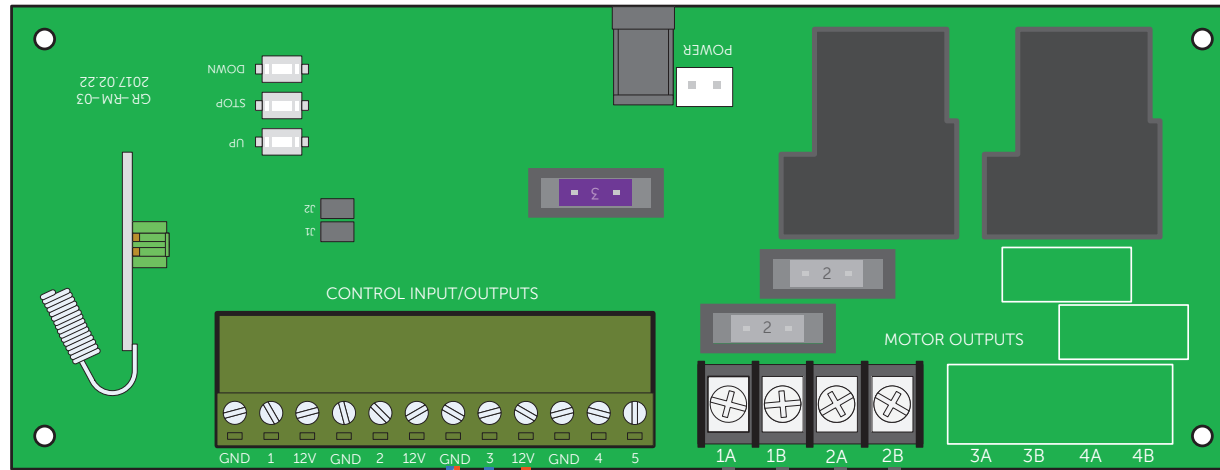


ROOF MAKER

WORLD CLASS ROOFLIGHTS

Call us: 0116 269 6297
Mon-Fri 9-5pm

REMOTE CONTROLLED ROOFLIGHT WIRING GUIDE



Control Input/Outputs Key

GND: Ground (-ve)

12V: +12V DC regulated supply

- 1: **Safety Switch Signal Input**
Connect to any ground, GND, to stop/switch off the output
- 2: **Thermostat Signal Input**
Connect to any ground, GND, to switch output to 'down'
- 3: **Rain Sensor Signal Input**
Connect to any ground, GND, to switch output to 'down'
- 4: **Control up**
Connect via switch any ground, GND, to switch output to 'UP'
- 5: **Control down**
Connect via switch any ground, GND, to switch output to 'DOWN'

Kemo Rain Sensor

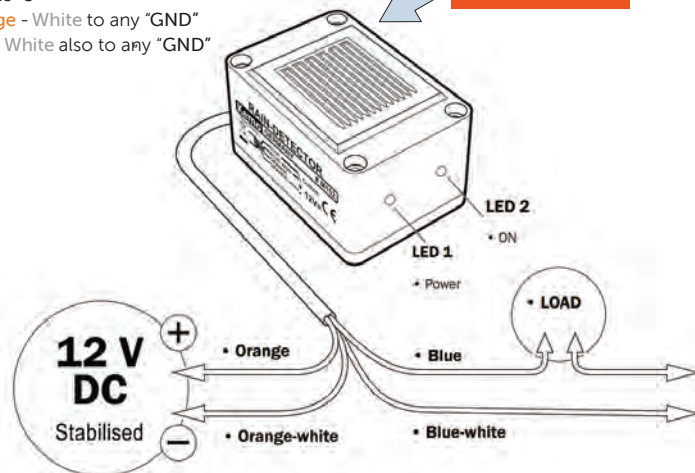
Connect:

Orange to any "12V"

Blue to "3"

Orange - White to any "GND"

Blue - White also to any "GND"



Outputs to actuator(s). If only using one actuator then either of the output pairs 1A and 1B or 2A and 2B can be used. Each numbered output is individually fused and is capable of supplying up to 2.1A continuous at 24VDC. The polarity at each output inverts when swapping between 'up' and 'down'. Outputs 3 and 4 are not used (cables here shown as grey – please see overleaf, which shows where cables need to be wired into the output pairs, which is dependent on the type of rooflight being installed).

WARNING

Ensure that the combined load at the three "12V" output terminals does not exceed 1A. A single Kemo rain sensor should consume less than 0.2A, so if using a rain sensor there should be a further 0.8A available at 12VDC (~9W) to also operate thermostats, safety sensor switches and similar devices. DO NOT connect any 12V directly to any GND, or any of 1, 2, 3, 4, 5 to any 12V


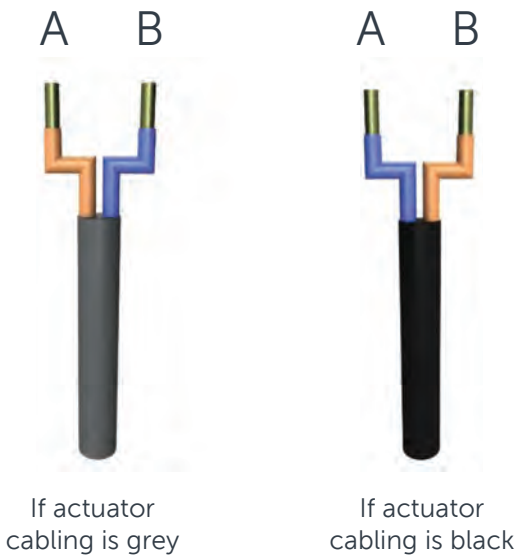
ROOF MAKER

WORLD CLASS ROOFLIGHTS

Call us: 0116 269 6297
Mon-Fri 9-5pm

REMOTE CONTROLLED ROOFLIGHT WIRING GUIDE

The chart below shows the different wiring combinations you will be working with, dependant on the type of rooflight you are installing. This is specified below each variation of wire shown. For sliding rooflights, there will always be 2 cables that you will wire in to output pairs 1A-1B & 2A-2B. For Flat hinged opening and Luxlite hinged opening rooflights, you will either have 1 set or 2 sets of actuator cables dependant on the amount of motors that your rooflight has been allocated. For single motor units, you can use either 1A-1B or 2A-2B and for 2 motors you will use both output pairings.

	
<p>All Sliding rooflights</p>	<p>Flat Hinged Opening & Luxlite™ Hinged Opening</p>

ROOF MAKER

WORLD CLASS ROOFLIGHTS

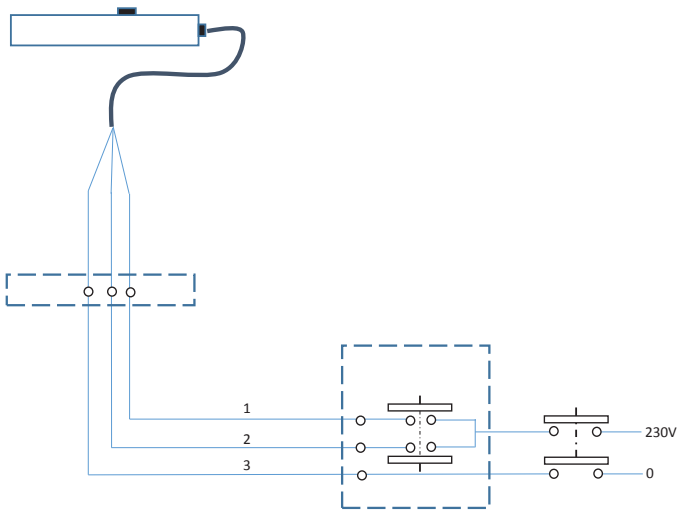
Call us: 0116 269 6297

Mon-Fri 9-5pm

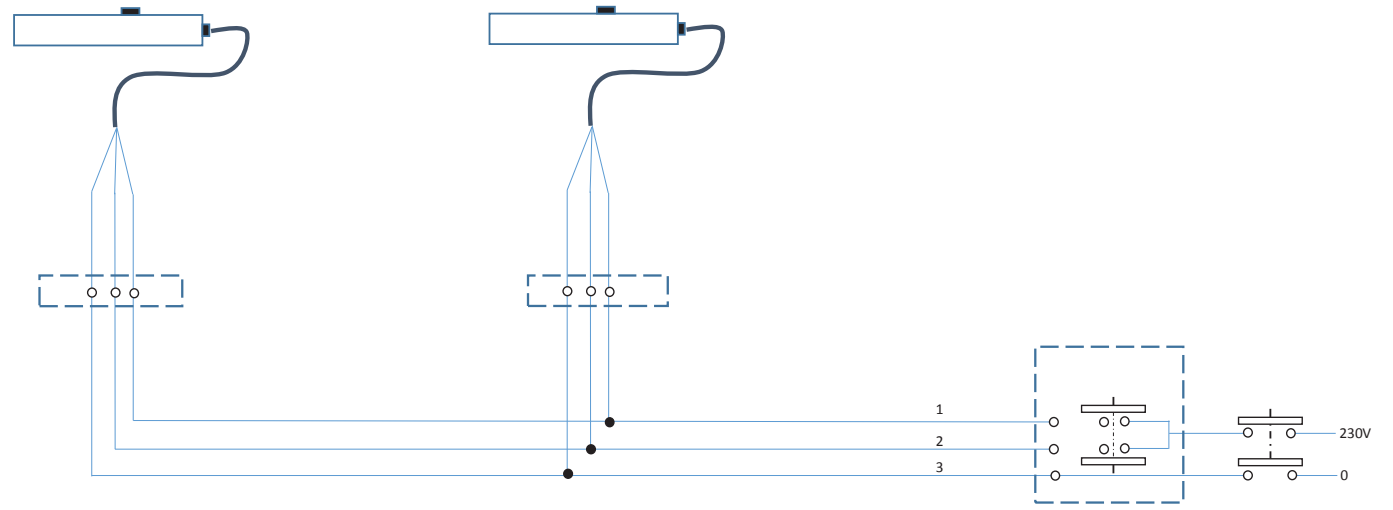
ROCKER SWITCH WIRING DIAGRAMS (3 CORE)

NOTE: THE TYPE OF MOTOR YOU RECEIVE IS JUSTIFIED BY THE SIZE OF THE ROOFLIGHT ORDERED.

3 CORE - SINGLE MOTOR



3 CORE - MULTIPLE MOTORS



Colour	Number	Signal
Brown	1	Opens
Black	2	Closes
Grey	3	Neutral

Refers to both single and multiple motors.

ROOF MAKER

WORLD CLASS ROOFLIGHTS

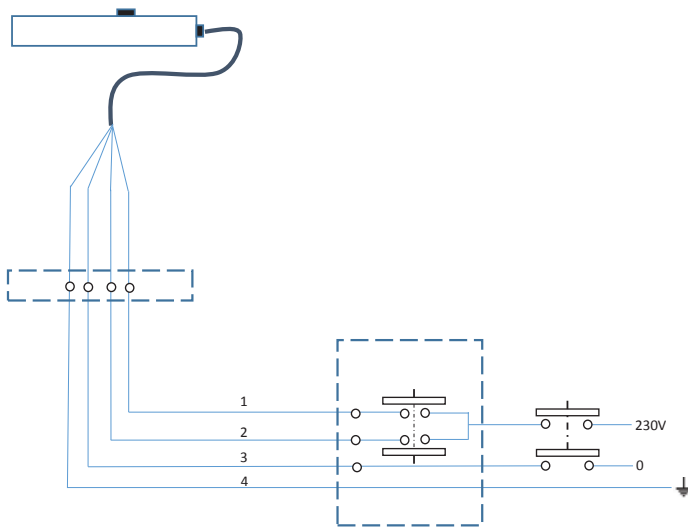
Call us: 0116 269 6297

Mon-Fri 9-5pm

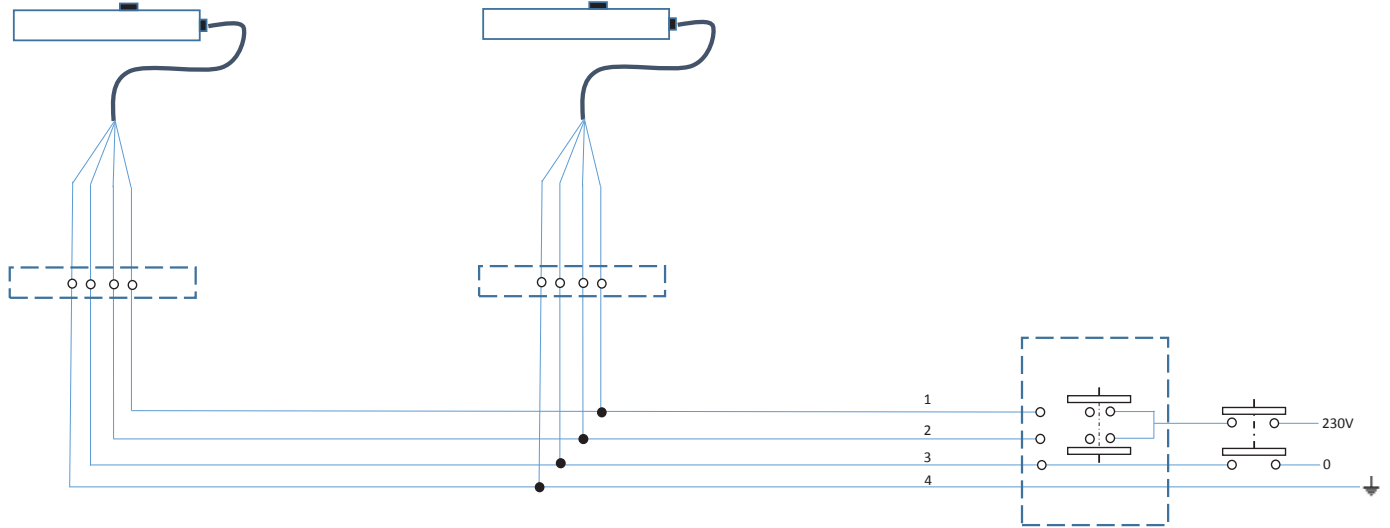
ROCKER SWITCH WIRING DIAGRAMS (4 CORE)

NOTE: THE TYPE OF MOTOR YOU RECEIVE IS JUSTIFIED BY THE SIZE OF THE ROOFLIGHT ORDERED.

4 CORE - SINGLE MOTOR



4 CORE - MULTIPLE MOTORS



Colour	Number	Signal
Brown	1	Opens
Black	2	Closes
Blue	3	Neutral
Yellow/Green	4	Ground

Refers to both single and multiple motors.