

ROOF MAKER

WORLD CLASS ROOFLIGHTS

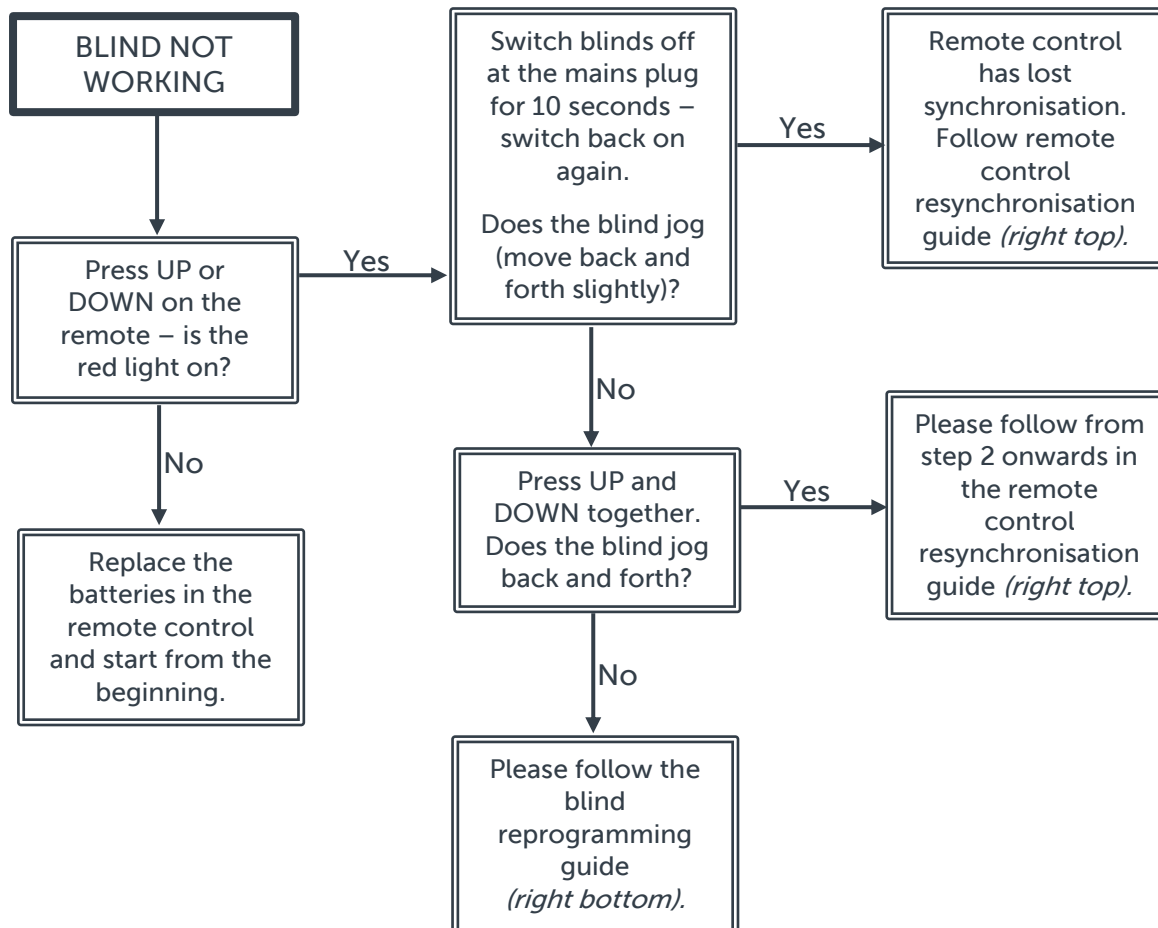
Call or visit us: 0116 269 6297

Mon – Fri 9-5pm, Sat 10-2pm

Showroom viewings on Sat by appointment only

TROUBLESHOOTING GUIDE - REMOTE CONTROLLED BLACKOUT BLINDS

Before you receive your rooflight with blinds, the remote control for your blinds should be synchronised to the motors in advance. Should you experience any issues with the controls when your blinds are powered up, this guide takes you through some simple steps on the flow chart below, to make sure your remote is synchronised correctly and the blind motors are programmed.



Remote Control Resynchronisation Guide

1. After turning your blind off at the mains power for 10 seconds and switching it back on, hold the UP and DOWN buttons on the remote control. The blind will jog back and forth slightly.
2. Turn the remote control over and use something small to press the programming button in on the back of the remote.
3. This will synchronise the blinds with the remote control.

Blind Reprogramming Guide

1. Your blind has not jogged back and forth after turning it off at the mains for 10 seconds and back on again. Please unclip your blinds from the guide rail and lower the motor side down (this is the side your blind retracts to).
2. Using something small, push in the programming button on the back of the blind motor unit, which you will see is located next to where the wires come out.
3. If your blind jogs back and forth slightly, you can release the button, clip the blind back in to the guide rail, and follow the remote control resynchronisation guide from step 2 onwards.
4. If your blind does not jog back and forth, please call our Customer Services team on 0116 269 6297 (opt. 1) for further help.