

ROOF MAKER

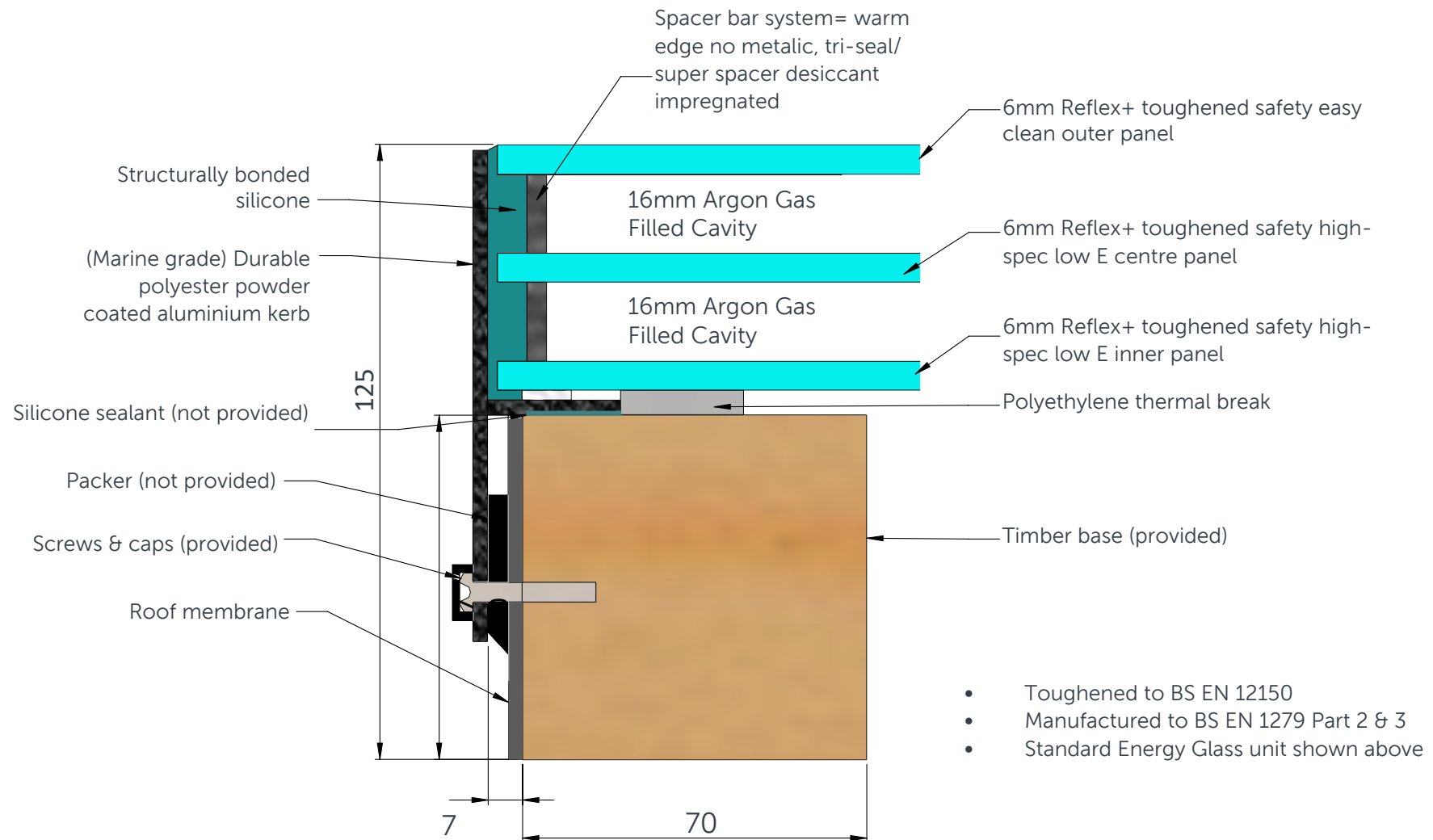
WORLD CLASS ROOFLIGHTS



PRODUCT SPECIFICATION AND INSTALLATION GUIDE

O-LITE

O-LITE:STANDARD PRODUCT SPECIFICATION



O-LITE: INSTALLATION INSTRUCTIONS

ON DELIVERY OF YOUR NEW O-LITE, YOU WILL RECEIVE;

- The upper glazed frame of your O-lite
- The timber base frame of your O-Lite (this will be either 'flat' or 'pitched' dependent on what you have opted for)
- 10 x Pan Head screws with caps (for fixing the upper glazed frame to the timber base frame).

IN ADDITION TO YOUR NEW O-LITE, YOU WILL NEED;

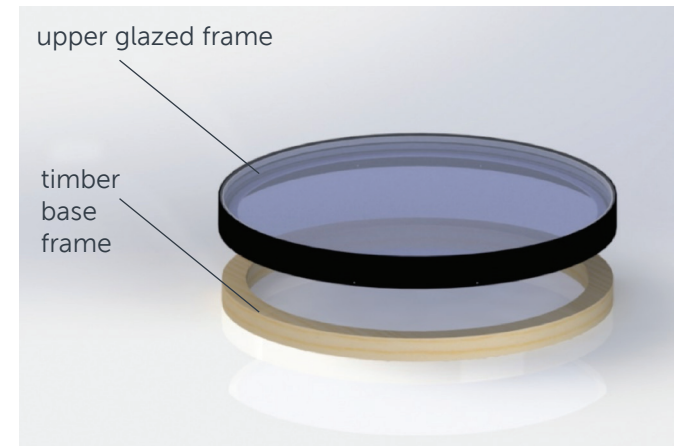
- Silicone Adhesive Sealant (high quality; Dow Corning 791 recommended)
- Drill, bits and screws as required
- Materials to prepare a timber kerb
- Glazing packers (2-5mm)

INSTALLATION GUIDE

Make sure to read through all steps and understand all requirements before beginning assembly.

Please note, we offer 2 options of timber base frame for the O-Lite. One option is set level and one option is set with the required 5-degree fall, which saves you having to create the fall on your timber kerb. Both options still require a timber kerb for it to be fixed to on the roof and this is outlined at the start of the guide.

Please take precaution when moving heavy objects and working at height. Be sure to use the correct equipment. Guide weights based on size, are shown on the chart to the right.

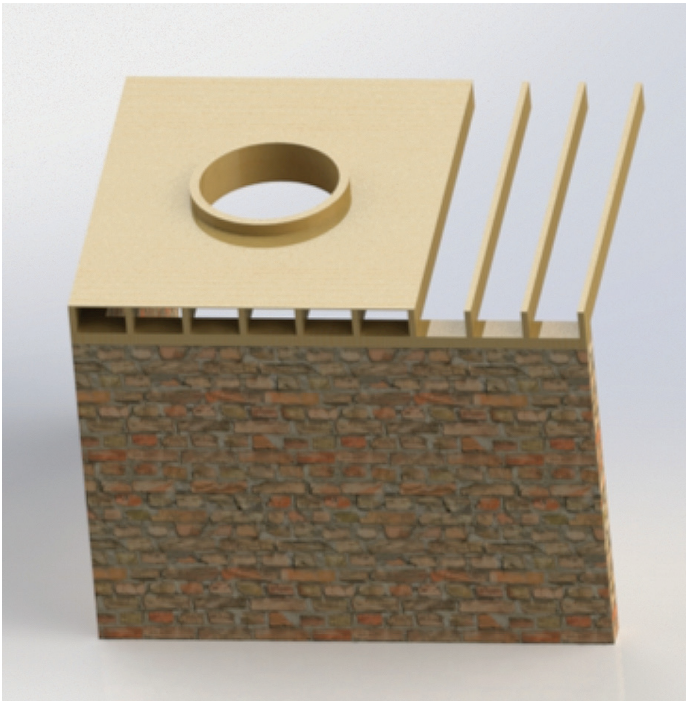


GUIDE WEIGHTS		
O-Lite Diameter (mm)	Glass Unit Weight (kg)	Timber Base Weight (kg)
750	35	4
1000	60	6
1500	130	10

STEP ONE

PREPARE A TIMBER KERB FOR YOUR O-LITE

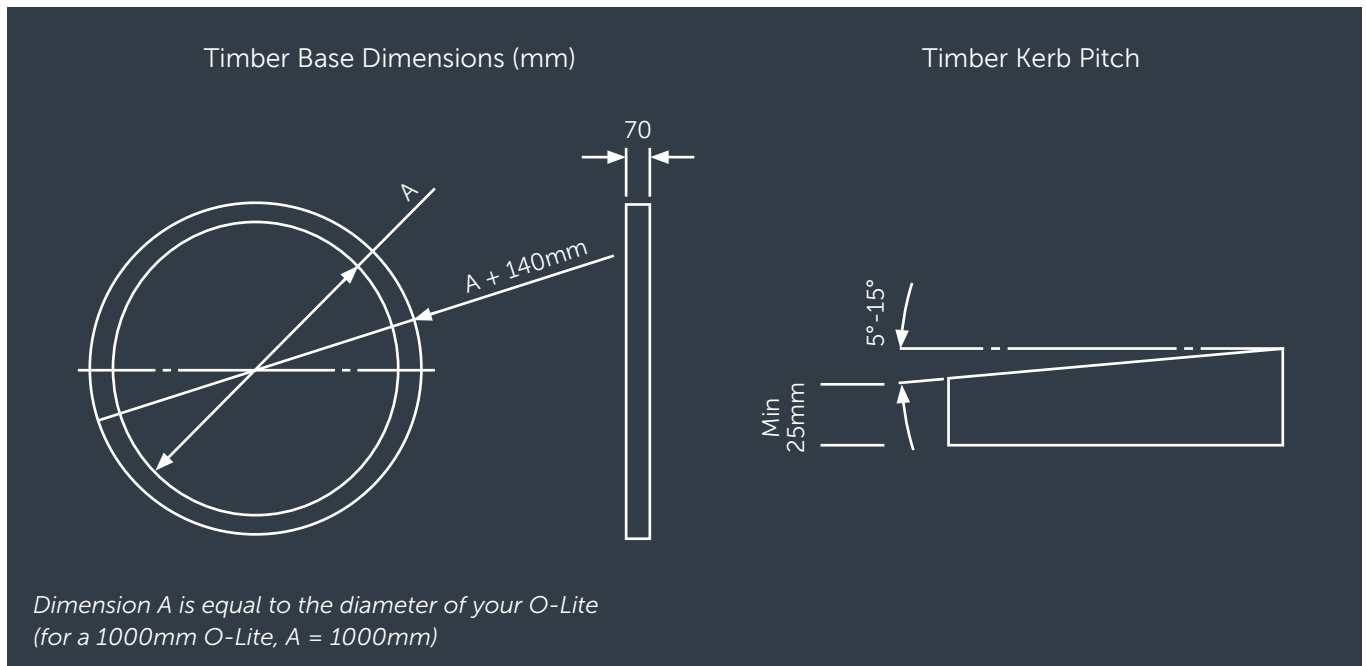
The dimensions of the timber kerb should match the timber base frame of the O-Lite. Based on there being 2 options of base frame, how you form this kerb, will differ dependent on whether you have purchased the 'pitched' or 'flat' version of the timber base frame with your rooflight.



The O-Lite will need to be set at a minimum pitch of 5°(maximum 15°), to prevent water pooling on the surface of the glass.

If you have purchased an 'pitched' timber base frame, this will have the required 5 degree angle built into it and you will only require a level, round timber kerb, 70mm in width, 25mm (minimum) in height, with the internal dimension matching the size of the rooflight ordered.

If you have opted for the 'level' timber base frame, you will need to work the required fall into the timber kerb you produce, which also needs to be 70mm in width and needs to be a minimum of 25mm in height at the lowest side.



ROOF MAKER

WORLD CLASS ROOFLIGHTS

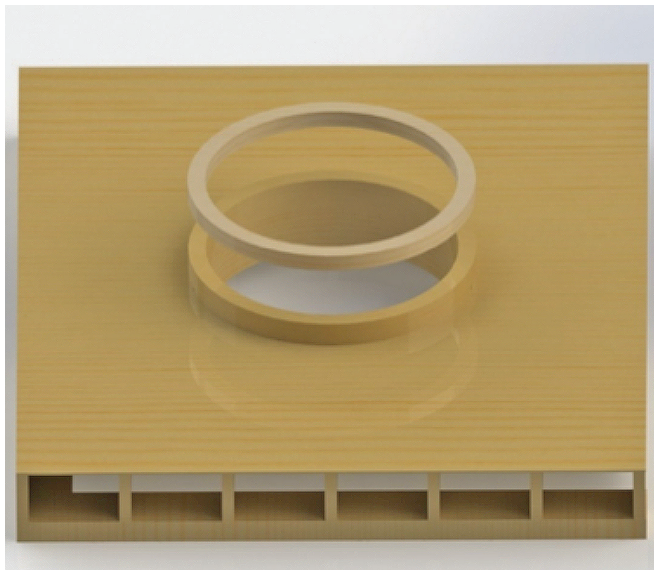
Call us: 0116 269 6297
Mon-Fri 9-5pm

STEP TWO

SEAL AND FASTEN THE O-LITE TIMBER BASE TO THE TIMBER KERB

Apply a bead of silicone around the top face of your timber kerb and press the O-Lite timber base in place on top of it, ensuring that the inner and outer faces are flush. The silicone bead should be close to the outer circumference of the O-Lite timber base.

You can now screw fix the timber base frame to your timber kerb, fixing a screw in the centre of the frame, every 400mm around the circumference.



STEP THREE

FIT ROOF MEMBRANE/FLASHING TO THE SIDES OF THE KERB AND TIMBER BASE FRAME

Apply the flashing or roof membrane to the sides of the timber kerb and timber base frame, leaving the top face as exposed timber.



STEP FOUR

SEAL THE UPPER GLAZED FRAME TO THE TIMBER BASE

Apply a bead of silicone around the top face of the timber base. The silicone bead should be close to the outer circumference of the O-Lite timber base.



ROOF MAKER

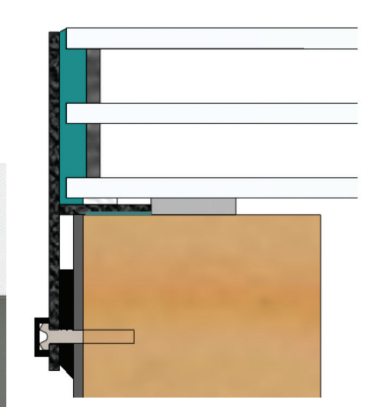
WORLD CLASS ROOFLIGHTS

Call us: 0116 269 6297
Mon-Fri 9-5pm

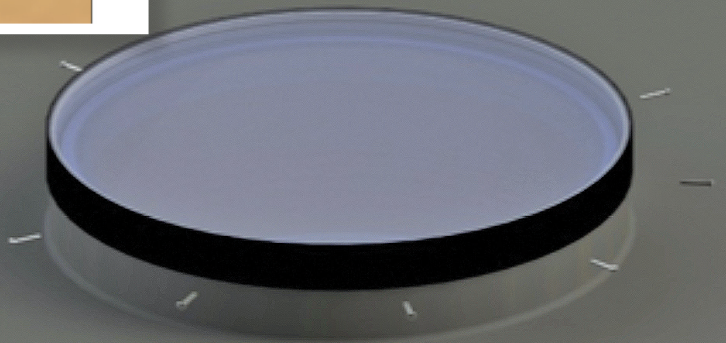
STEP FIVE

FASTEN THE UPPER GLAZED FRAME TO THE TIMBER BASE

Fasten the upper glazed frame to the timber base through the clearance holes, around the aluminium frame. Use your plastic packers between the lid and the timber base to keep the gap equal all the way around the rooflight. This will also prevent you from over tightening the screws and bending the frame.



Insert
packers
between the
aluminium
frame and
kerb



STEP SIX

FINISHING YOUR O-LITE INSTALLATION

Use the provided screw caps to conceal the screw heads that you have just fitted.

You are now free to apply plasterboard to the interior of your curved aperture and O-Lite timber frame. (For plastering finish guidelines, please follow the cross section fitting guide, included at the end of this document).

Your O-Lite is now fully installed.



ROOF SECTION FITTING GUIDE

