

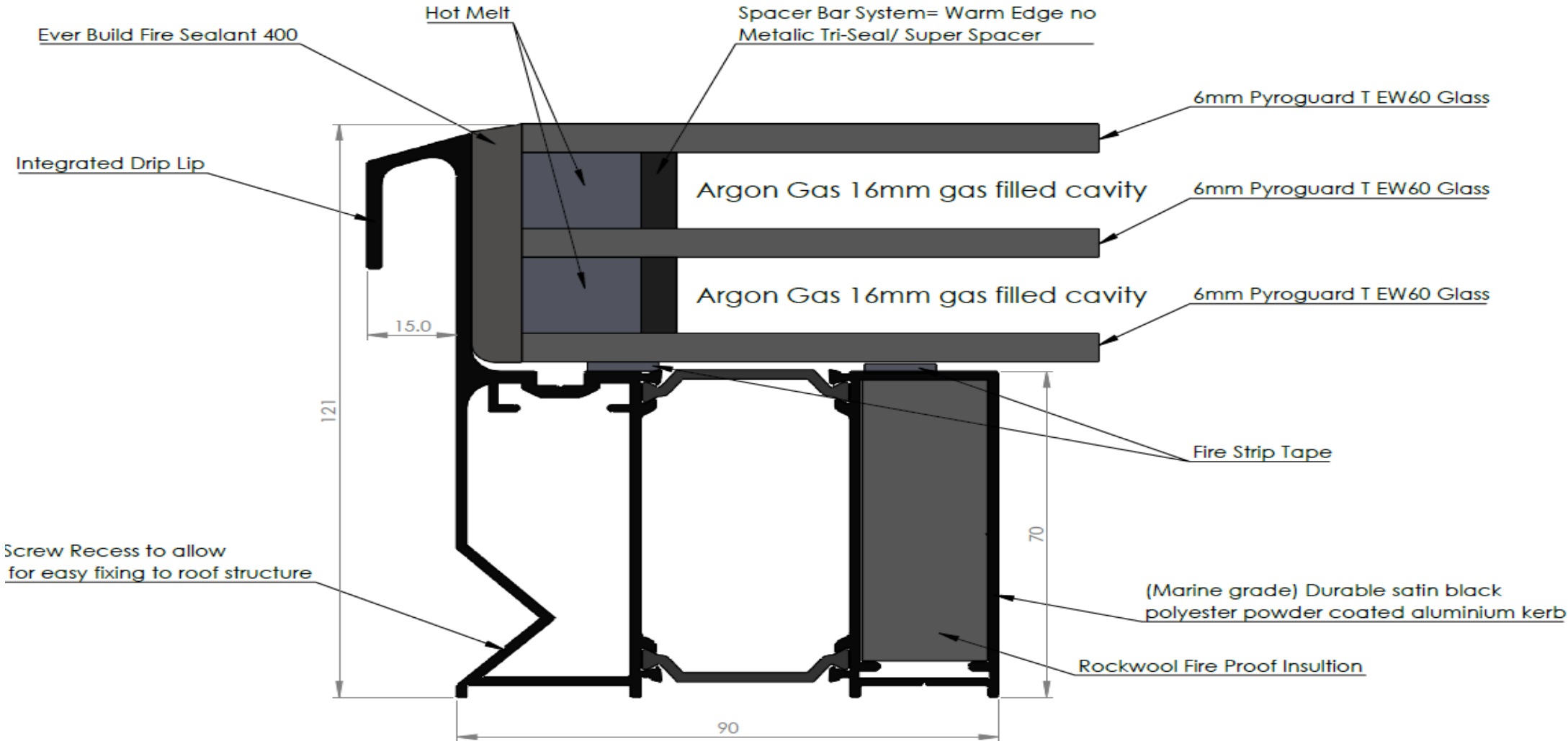
# ROOF MAKER

WORLD CLASS ROOFLIGHTS



PRODUCT SPECIFICATION AND INSTALLATION GUIDE FIRE RATED FIXED  
FLAT ROOFLIGHT

# Product Spec Cross Section

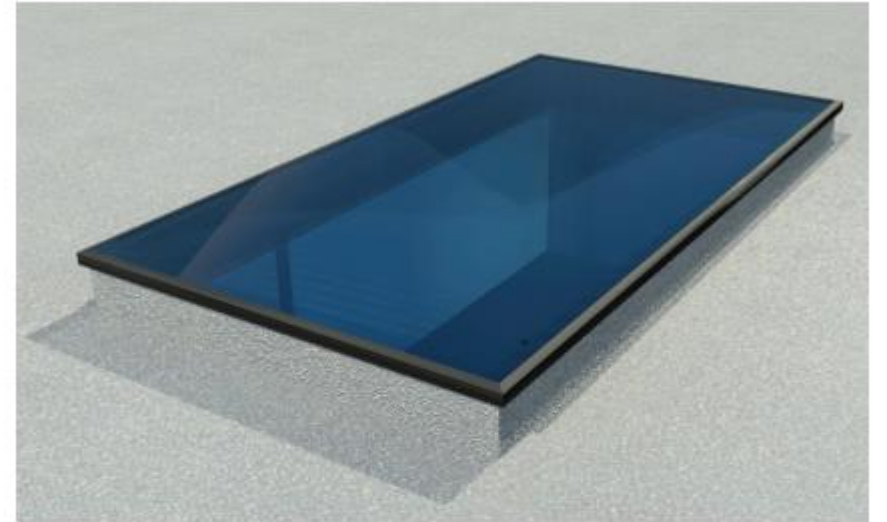


# TRIPLE GLAZED Fire Rated FIXED FLAT ROOFLIGHT: INSTALLATION GUIDE

IN ADDITION TO YOUR FIRE RATED FIXED FLAT ROOFLIGHT, YOU WILL NEED;

- Drill, bits and screws as required
- Materials to prepare a timber kerb
- Zero Flame Treatment
- G- Tec Fire Plasterboard

GUIDE WEIGHTS <small>(Triple Glazed)</small>	
Size(mm)	Weight(kg)
<b>400x400</b>	<b>20</b>
<b>1000x1000</b>	<b>75</b>
<b>1400x1400</b>	<b>139</b>



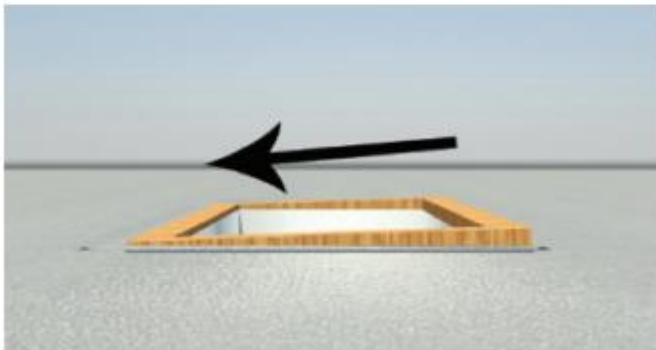
## INSTALLATION GUIDE

Make sure to read through all steps and understand all requirements before beginning the installation.

# Step 1

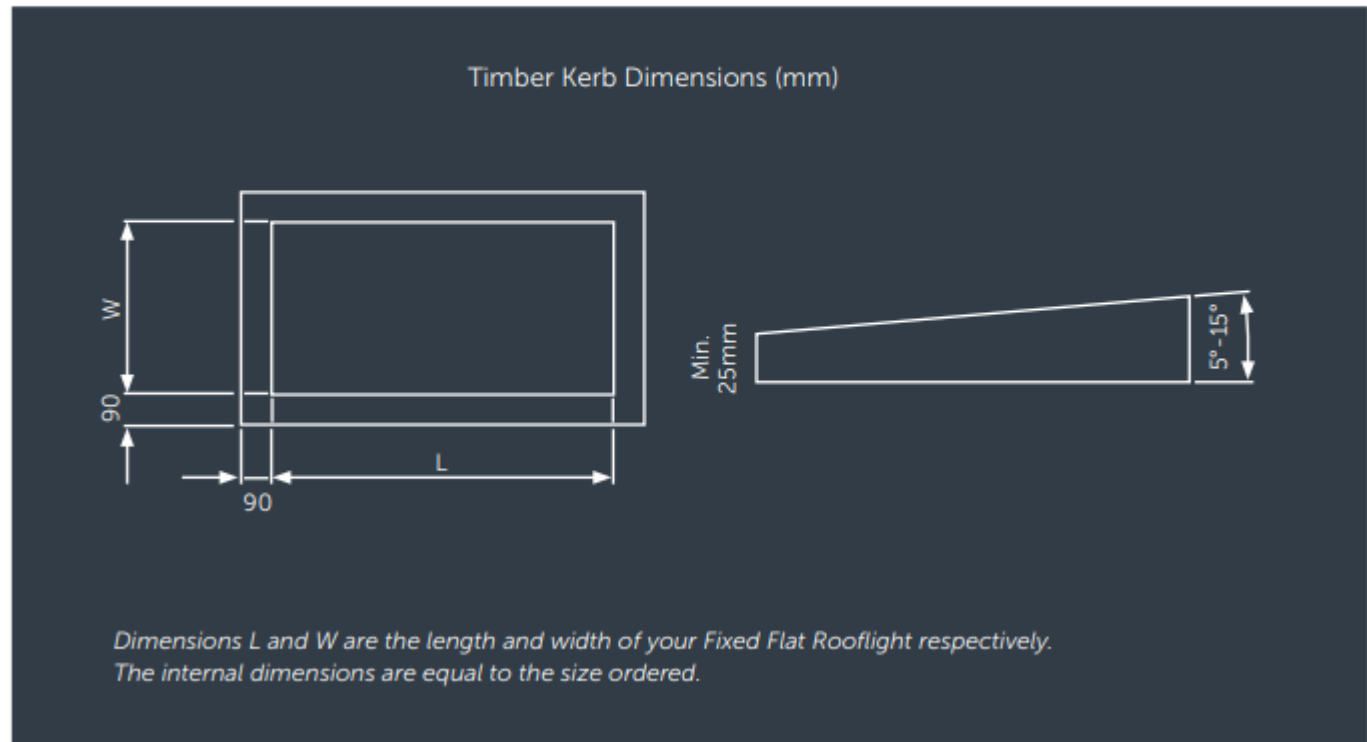
## PREPARE A TIMBER KERB FOR YOUR ROOFLIGHT

Prepare a 90mm width timber kerb for your rooflight. This should be a minimum of 25mm in height from the finished roof level. The internal dimensions of your kerb should match the internal dimensions of the rooflight/size ordered.



With Zero Flame Treatment

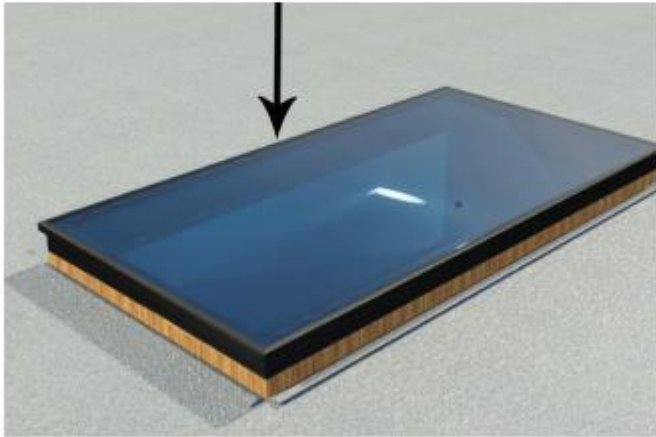
Your Fixed Flat Rooflight needs to be pitched at a minimum of 5° to allow water run-off. If your roof does not have this pitch, build the angle into your timber kerb. We recommend that you run the fall across the 'width' or 'shorter side' of the rooflight when building an angled kerb, as the fall will be less noticeable, which will improve the aesthetics when fitted.



# Step 2

## POSITION THE ROOFLIGHT

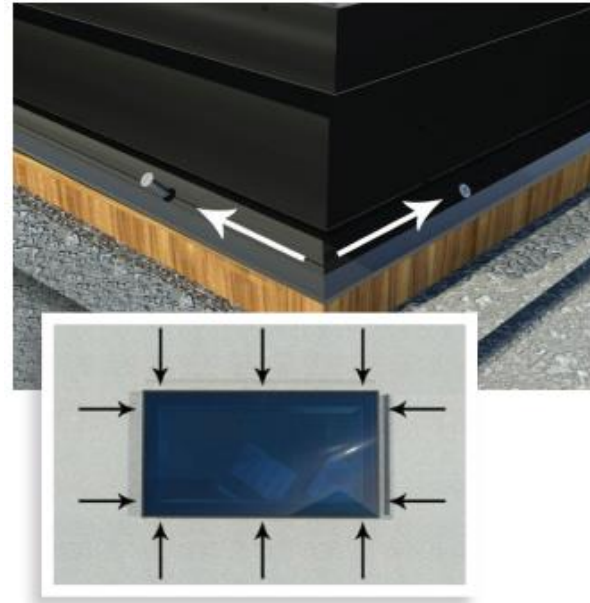
Bring your Fixed Flat Rooflight into position. Align the rooflight so that it is centered on the aperture.



# Step 3

## SECURE THE ROOFLIGHT TO THE KERB

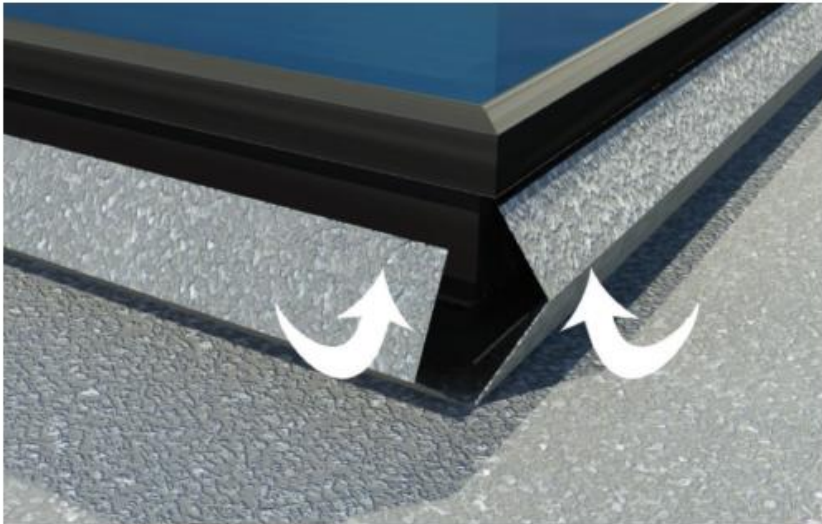
Use the recess in the rooflight upstand to position the screws. Drill a pilot hole appropriate for your chosen screw diameter, and fix the frame with screws in the indicated positions: 100mm from each corner, and in the centre of the long sides.



# Step 4

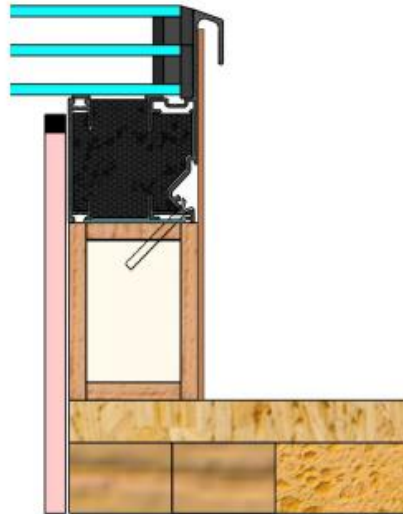
## A: SEAL THE ROOFLIGHT WITH THE ROOF MEMBRANE

Seal your flashing/roof membrane up the side of the rooflight, tucking it up underneath the dedicated drip overhang. When using a torch to seal roof membrane, cut material to the suitable size, fold back and apply heat to the sheet, away from the rooflight to avoid damage. Pre-heated membrane can then be bonded to the side of the rooflight.



## B: WHEN USING GRP ROOF FINISH

When using GRP to finish roof, silicone bond a 4mm plywood border around the upstand and kerb, this will provide a more suitable surface for the GRP layer to adhere to.



For plastering finish guidelines, please follow the roof section fitting guide, included at the end of this document.

Congratulations! Your Fixed Flat Rooflight is now installed.

# ROOF SECTION FITTING GUIDE - Triple GLAZED FIRE RATED FIXED FLAT

Min fall 5° (inc roof) to allow water to run off  
Max fall 15° (inc roof)

