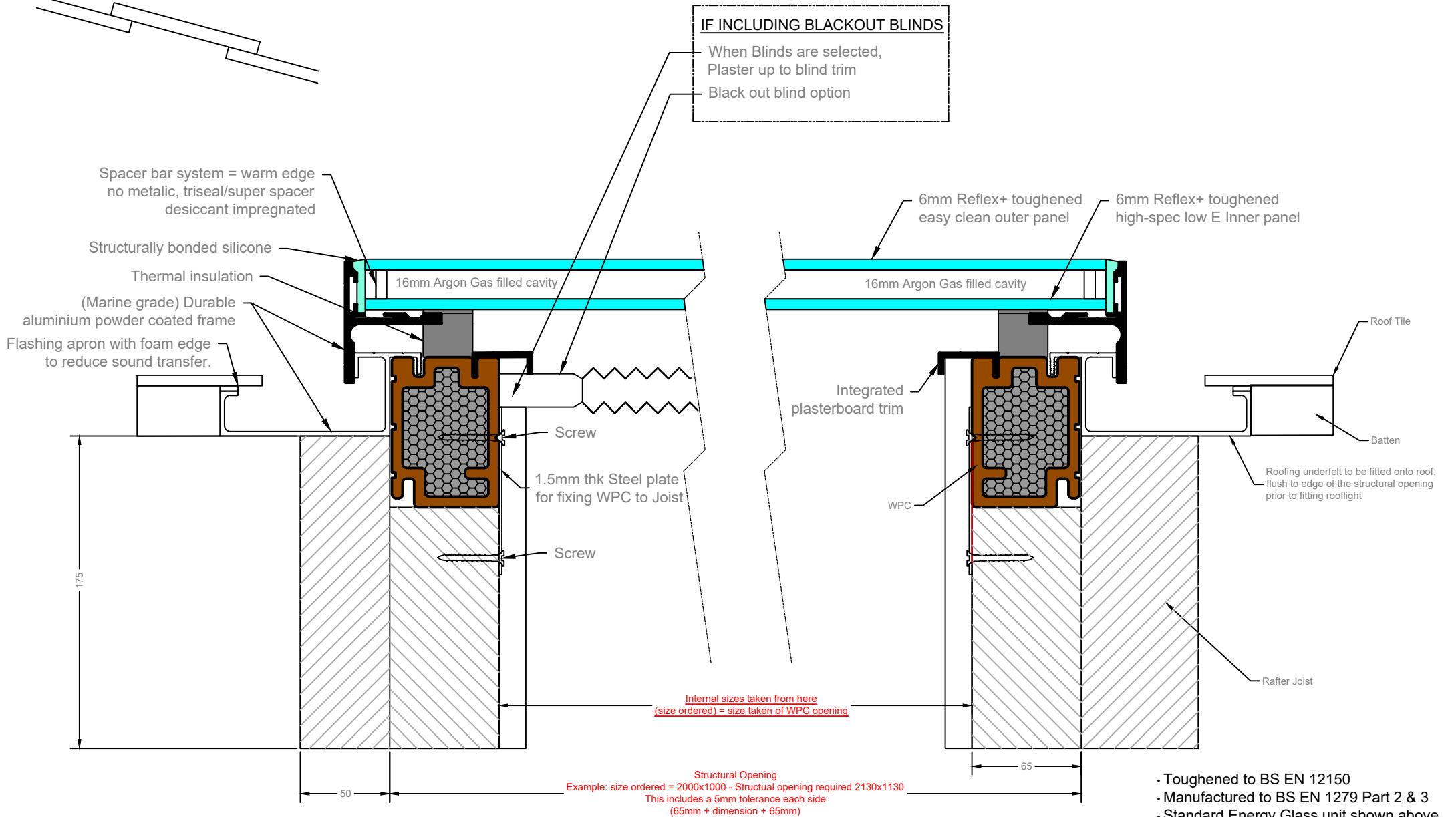


Minimum fall 15° (inc roof)
Maximum fall 75° (inc roof)



IF INCLUDING BLACKOUT BLINDS
When Blinds are selected,
Plaster up to blind trim
Black out blind option

Spacer bar system = warm edge
no metallic, triseal/super spacer
desiccant impregnated

Structurally bonded silicone

Thermal insulation

(Marine grade) Durable
aluminium powder coated frame

Flashing apron with foam edge
to reduce sound transfer.

16mm Argon Gas filled cavity

6mm Reflex+ toughened
easy clean outer panel

6mm Reflex+ toughened
high-spec low E Inner panel

16mm Argon Gas filled cavity

Screw

1.5mm thk Steel plate
for fixing WPC to Joist

Screw

Integrated
plasterboard trim

WPC

Roof Tile

Batten

Roofing underfelt to be fitted onto roof,
flush to edge of the structural opening
prior to fitting rooflight

Rafter Joist

Internal sizes taken from here
(size ordered) = size taken of WPC opening

Structural Opening
Example: size ordered = 2000x1000 - Structural opening required 2130x1130
This includes a 5mm tolerance each side
(65mm + dimension + 65mm)

- Toughened to BS EN 12150
- Manufactured to BS EN 1279 Part 2 & 3
- Standard Energy Glass unit shown above

ROOF MAKER
WORLD CLASS ROOFLIGHTS

Roof Maker Ltd
1 Pinfold Road , Thurmaston
Leicester, LE4 8AS
Tel: 0116 269 6297
Fax: 0116 269 6291
Email: sales@roof-maker.co.uk

Title: LUXLITE DOUBLE GLAZED (FIXED & HINGED) - TYPICAL FITTING GUIDELINES - WARM DECK ROOF

THIS DRAWING IS FOR REFERENCE ONLY. PLEASE REPORT ANY DISCREPANCIES TO THE DESIGNER BEFORE ANY WORKS COMMENCE.
ALL DIMENSIONS ARE IN mm. ALL DIMENSIONS TO BE CHECKED ON SITE BEFORE ANY WORKS COMMENCE.

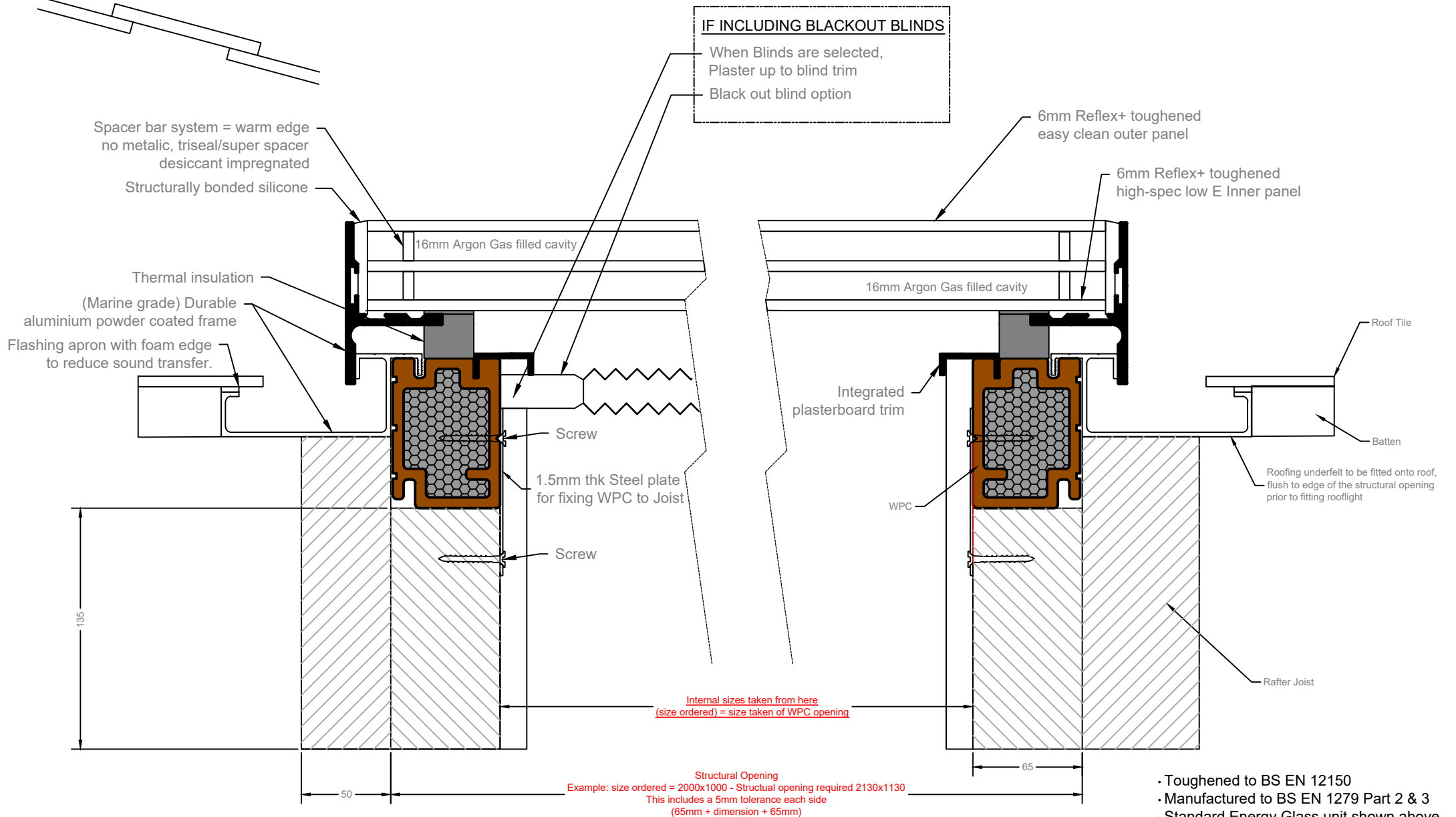
Date: 17/12/2024

Drawn: UZCO

Checked: SM

Scale:
Approx. 1:10 @A4

Minimum fall 15° (inc roof)
Maximum fall 75° (inc roof)



IF INCLUDING BLACKOUT BLINDS
When Blinds are selected,
Plaster up to blind trim
Black out blind option

Internal sizes taken from here
(size ordered) = size taken of WPC opening

Structural Opening
Example: size ordered = 2000x1000 - Structural opening required 2130x1130
This includes a 5mm tolerance each side
(65mm + dimension + 65mm)

- Toughened to BS EN 12150
- Manufactured to BS EN 1279 Part 2 & 3
- Standard Energy Glass unit shown above