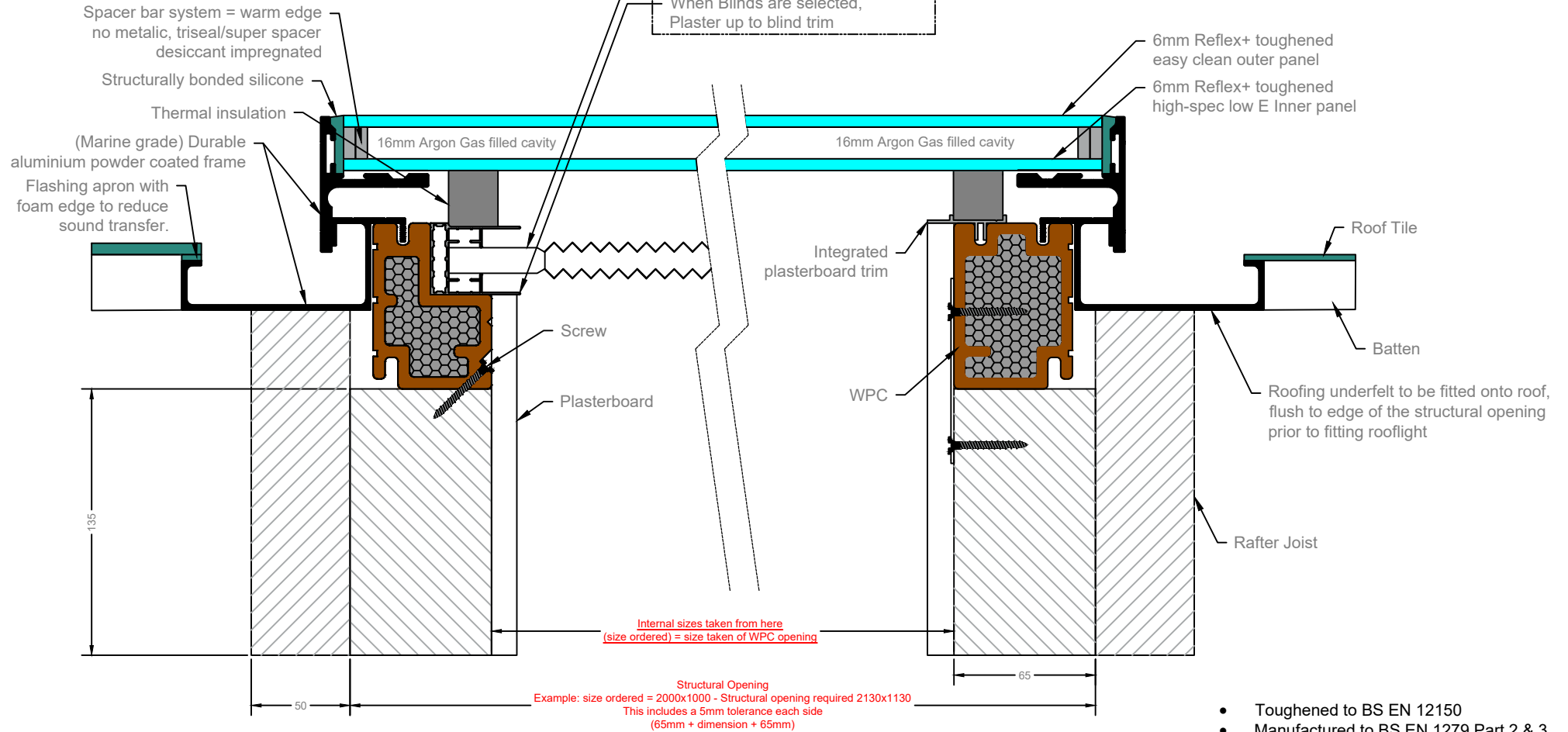


Minimum fall 15° (inc roof)  
Maximum fall 75° (inc roof)

**IF INCLUDING BLACKOUT BLINDS**

Black out blind option  
When Blinds are selected,  
Plaster up to blind trim



- Toughened to BS EN 12150
- Manufactured to BS EN 1279 Part 2 & 3
- Standard Energy Glass unit shown above

**ROOF MAKER**  
WORLD CLASS ROOFLIGHTS

**Roof Maker Ltd**  
1 Pinfold Road , Thurmaston  
Leicester, LE4 8AS  
Tel: 0116 269 6297  
Fax: 0116 269 6291  
Email: sales@roof-maker.co.uk

**Title: FIXED & OPENING LUXLITE (DOUBLE GLAZED) - TYPICAL FITTING GUIDELINES**

THIS DRAWING IS FOR REFERENCE ONLY. PLEASE REPORT ANY  
DISCREPANCIES TO THE DESIGNER BEFORE ANY WORKS COMMENCE.  
ALL DIMENSIONS ARE IN mm. ALL DIMENSIONS TO BE CHECKED ON  
SITE BEFORE ANY WORKS COMMENCE.

**Date: 07/05/2025**

**Drawn: UZCO**

**Checked: SM**

**Scale:**  
**Approx. 1:10 @A4**