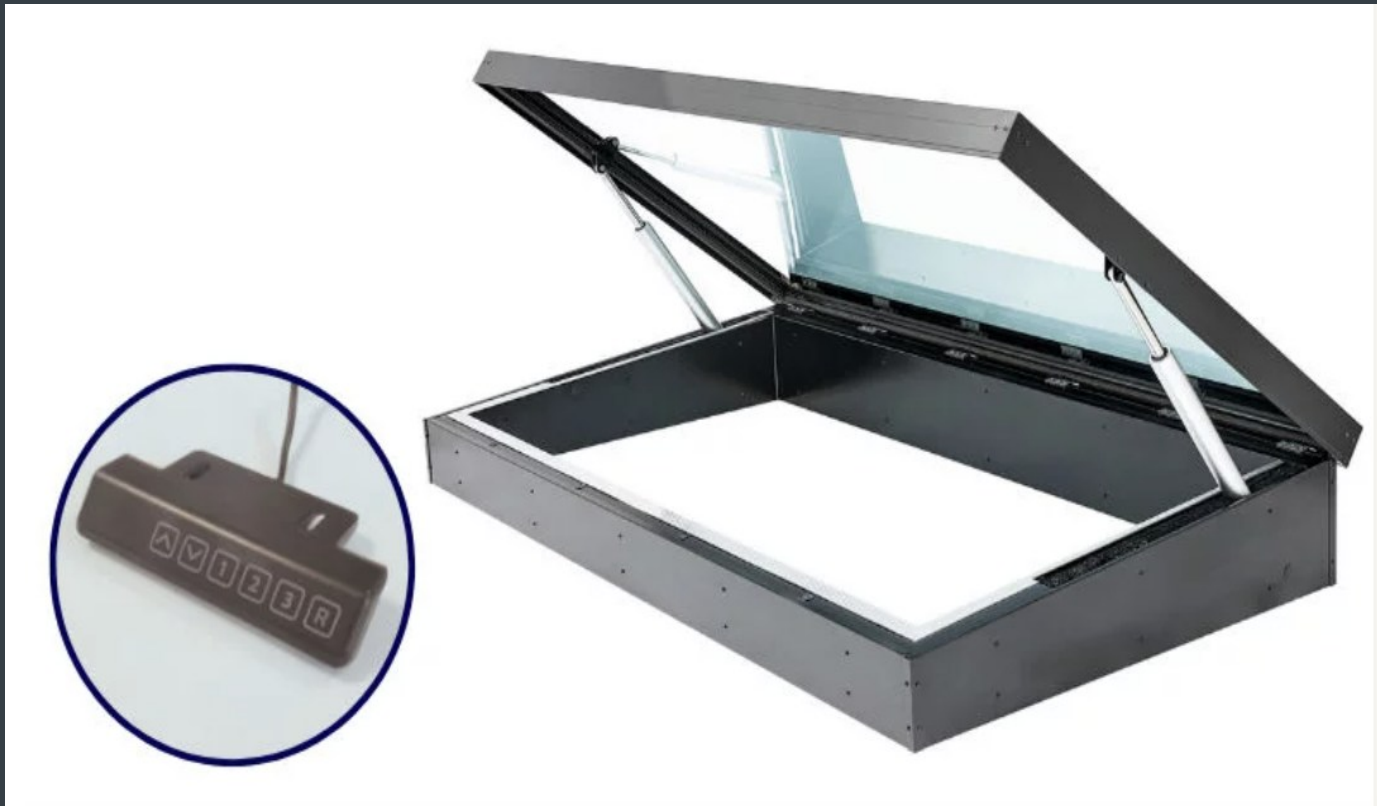


# ROOF MAKER

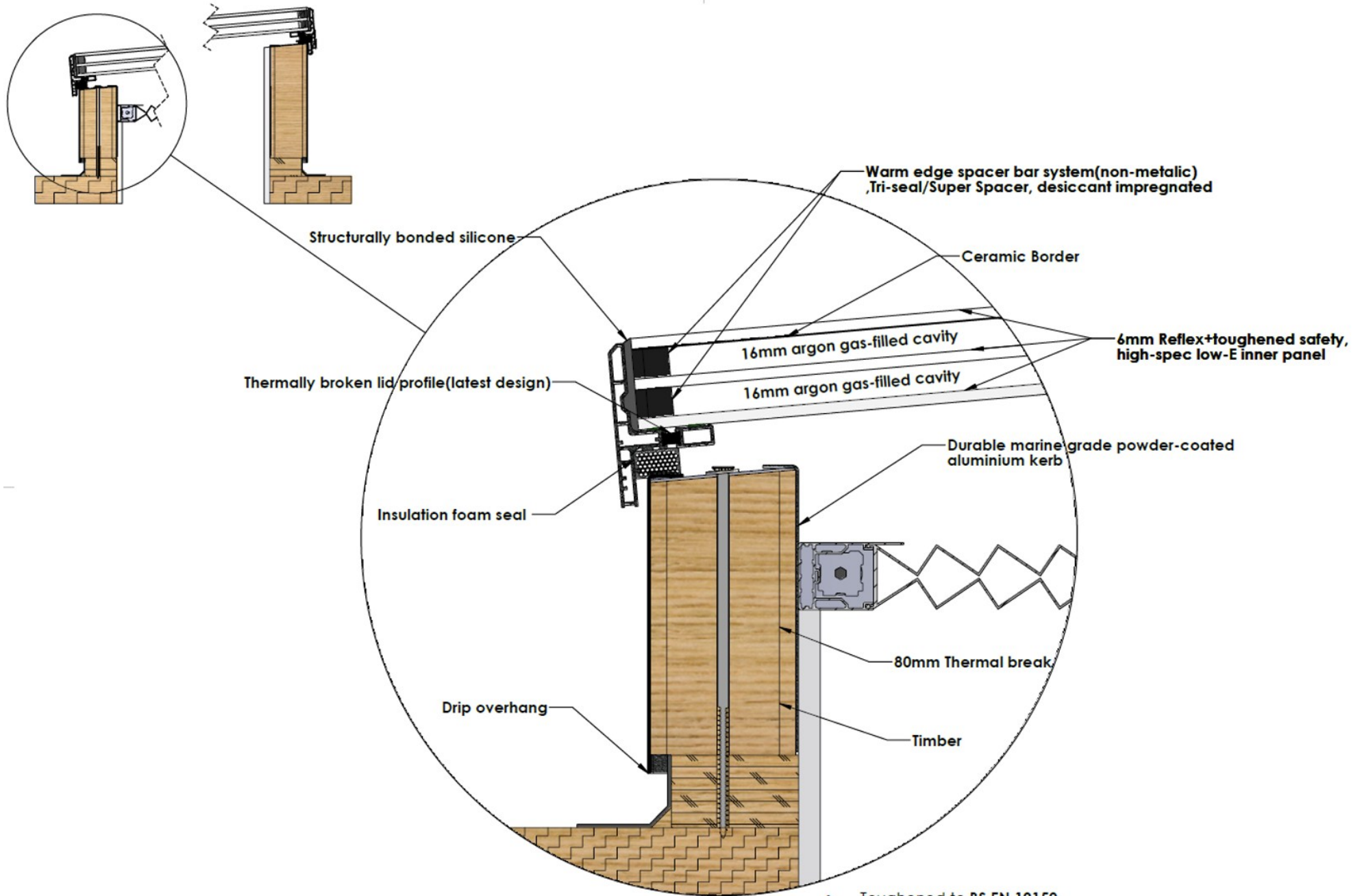
WORLD CLASS ROOFLIGHTS



PRODUCT SPECIFICATION AND INSTALLATION GUIDE

ACCESS OPENING FLAT ROOFLIGHT

Version 7 Updated 17th March 2026



Structurally bonded silicone

Thermally broken lid profile (latest design)

Insulation foam seal

Drip overhang

Warm edge spacer bar system (non-metallic)  
Tri-seal/Super Spacer, desiccant impregnated

Ceramic Border

16mm argon gas-filled cavity

16mm argon gas-filled cavity

6mm Reflex+ toughened safety,  
high-spec low-E inner panel

Durable marine grade powder-coated  
aluminium kerb

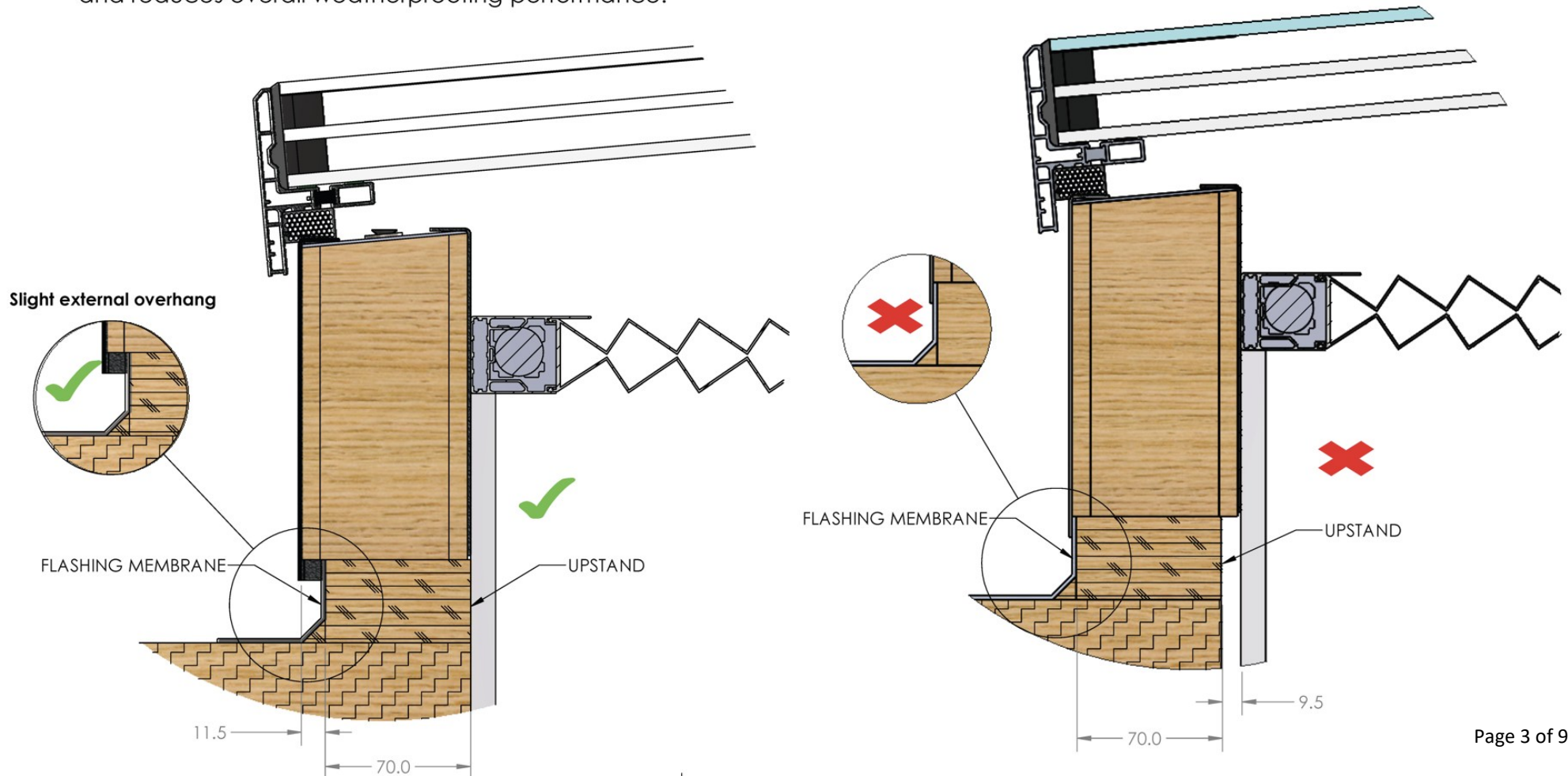
80mm Thermal break

Timber

- Toughened to BS EN 12150
- Manufactured to BS EN 1279 Part 2&3
- Standard energy glass unit shown above

When installing onto a timber upstand kerb, it is essential that the **aluminium rooflight internal kerb aligns correctly with the internal face of the upstand**. For a typical width of 70.0 mm, the aluminium kerb should finish flush or with a **slight external overhang**, (~11.5mm) as shown in the image below. This allows the flashing membrane to be applied correctly and enables rainwater run off cleanly over the aluminium frame and down the external face of the kerb.

If the aluminium kerb is set back, creating an internal step (e.g. 9.5 mm offset), this results in an incorrect installation. Such a configuration disrupts water run-off and can lead to water pooling at the interface. This increases the risk of water ingress and reduces overall weatherproofing performance.



Minimum fall 5 deg(including roof) to allow water to run off

**IF INCLUDING BLACKOUT BLINDS**

When blinds are selected, plaster up to the blind trim

Black out blind option

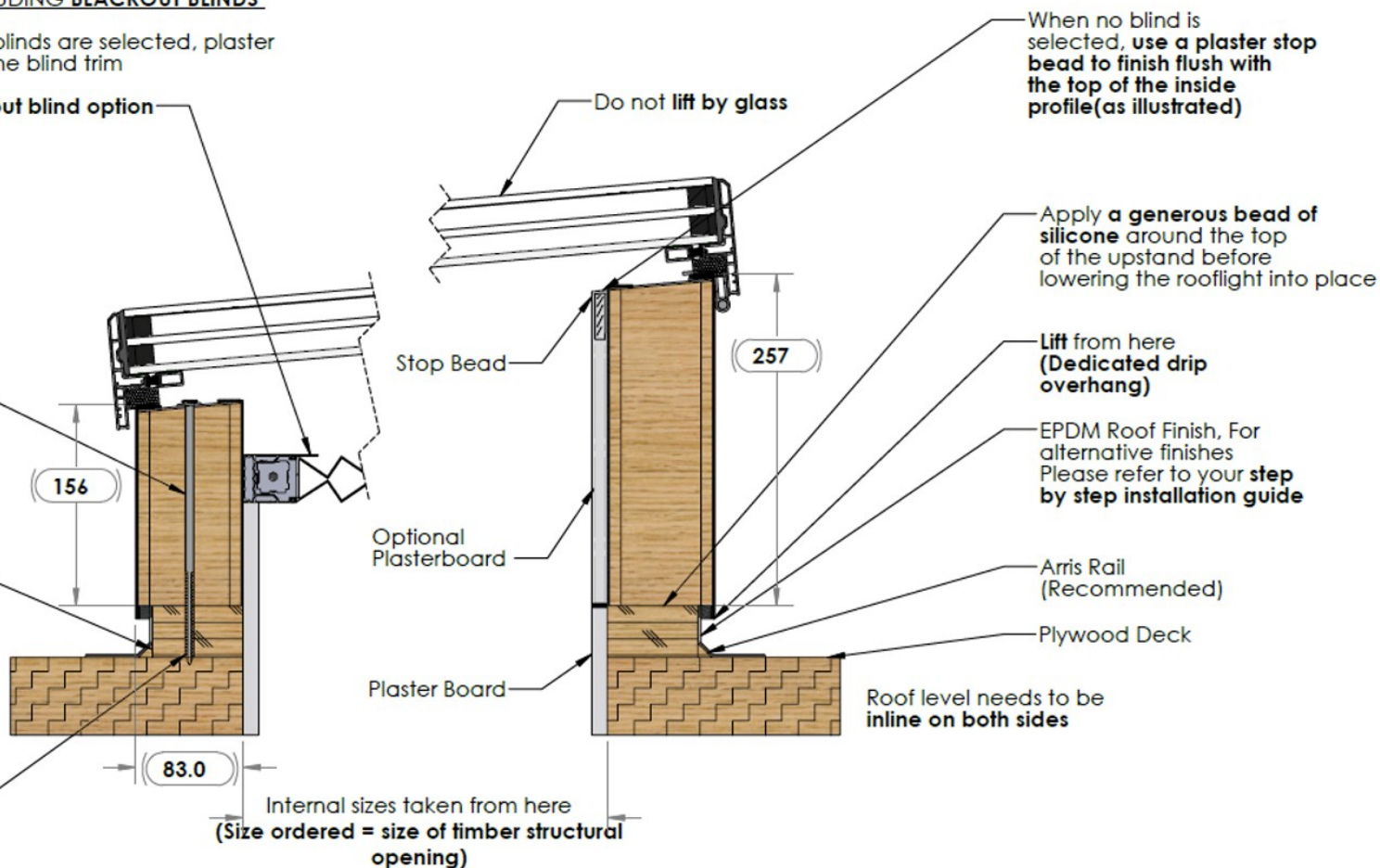
This requires you to power the rooflight before opening - refer to step by step installation guide (Fixing screw 200mm)

Maximum 70mm width timber upstand, guide minimum height of 30mm. Pre-weather the side face of your timber upstand finishing level with the top(as illustrated). Leave the top face of the timber upstand as exposed

**IMPORTANT do not exceed 70mm width for the upstand to avoid compromising drip detail**

Roof level needs to be inline on both sides

To fix the unit to the timber upstand use the screws provided



# ROOF MAKER

WORLD CLASS ROOFLIGHTS

Call us: 0116 269 6297

Mon-Fri 9-5pm

## ACCESS OPENING FLAT ROOFLIGHT: INSTALLATION GUIDE

ON DELIVERY OF YOUR NEW ACCESS OPENING FLAT ROOFLIGHT, IN ADDITION YOU WILL RECIEVE;

**\*CONTROL, REMOTE**

- Control switch combo unit (86x86x35mm)
- Remote control
- Long Screws for fixing the rooflight to the timber kerb

**\*IF CONTROL SWITCH CONTROLLED...**

- Control switch
- Long Screws for fixing the rooflight to the timber kerb

***\*All additional accessories and components will come with your rooflight delivery and be packaged in a cardboard box.***

IN ADDITION TO YOUR NEW ACCESS OPENING FLAT ROOFLIGHT, YOU WILL NEED;

- Silicone Adhesive Sealant (high quality; Dow Corning 791 recommended)
- Drill, bits and screws as required
- Materials to prepare a timber kerb

### INSTALLATION GUIDE

Make sure to read through all steps and understand all requirements before beginning assembly. We also recommend that you study the 'cable location guide' which provides further guidance on how to run the rooflight cabling into the property as part of the installation. This is located at the end of this guide, alongside the wiring guide and a roof section diagram.

***Please take precaution when moving heavy objects and working at height. Be sure to use the correct equipment. Guide weights based on size, are shown on the chart to the right.***



Size (mm)	Weight (KG)
1000 x 1000	80KG
1500 x 1000	120KG
2000 x 1000	160KG
2500 x 1000	200KG
3000 x 1000	240KG
3500 x 1000	300KG
4000 x 1000	320KG

# ROOF MAKER

WORLD CLASS ROOFLIGHTS

Call us: 0116 269 6297  
Mon-Fri 9-5pm

## STEP ONE

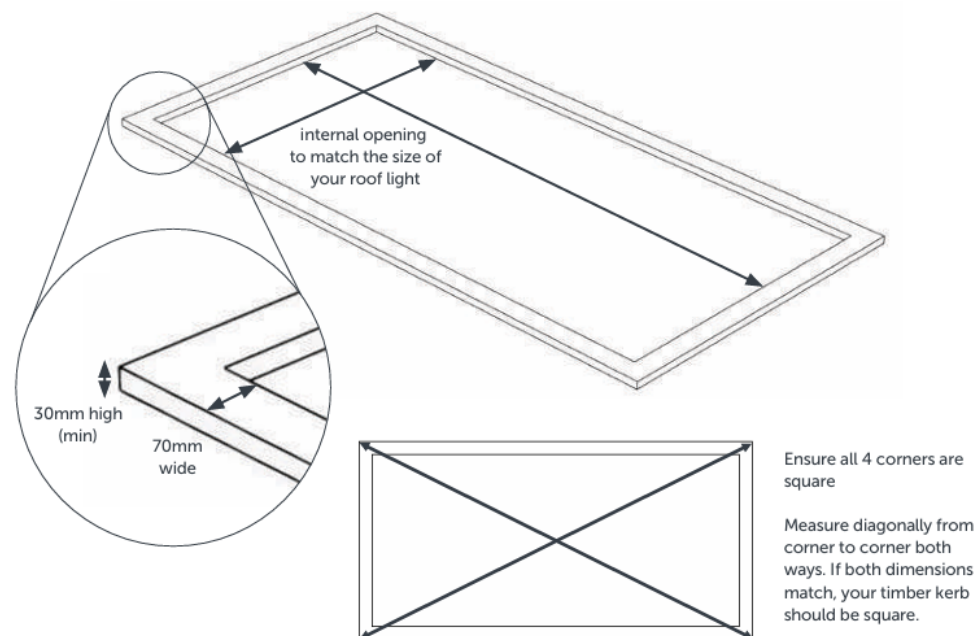
### PREPARE A TIMBER KERB FOR YOUR ROOFLIGHT

Prepare a 70mm width timber kerb for your rooflight. This should be a minimum of 30mm in height from the finished roof level (at the lowest side). The internal dimensions of your kerb should match the internal dimensions of the rooflight/size ordered.

i) Before you begin the installation of your new roof light, you will have installed the timber kerb. The size of the internal opening should reflect the exact size of the roof light you have ordered. For example, the roof opening should measure exactly 2m x 1m for a unit that measures 2m x 1m.

Your timber kerb should measure 70mm in width, to match the width of the built-in upstand that you are going to assemble. We recommend a minimum height of 30mm from roof level, but this can be increased if required.

The upstand should be perfectly level and we also recommend that you check the corners have a 90° angle, by measuring it diagonally from corner to corner before starting the assembly of the roof lantern.



# ROOF MAKER

WORLD CLASS ROOFLIGHTS

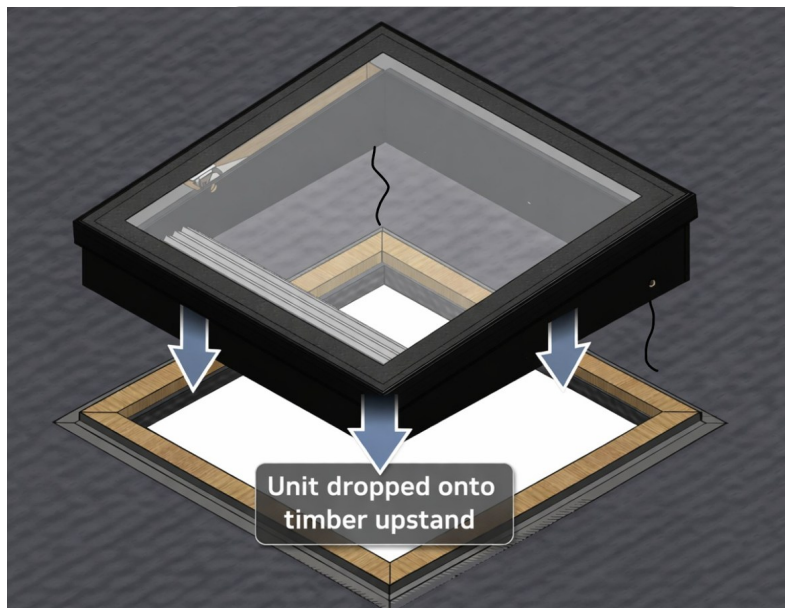
Call us: 0116 269 6297  
Mon-Fri 9-5pm

## STEP TWO

### CREATE HOLES/GROOVES IN THE TIMBER KERB TO RUN THE ROOFLIGHT CABLING INTO THE PROPERTY

Trial fit your rooflight and mark a suitable location to drill a hole/s or create notches for the rooflight's actuator cables - *Please refer to the cable location guide located on page 8 of this document. This gives advice as to where we recommend the control box can be located within the property.*

*You do not need to refer to this guide if you have a control switch controlled rooflight. For switch controlled rooflights, you will just be extending the actuator cable/s to your chosen location of the control switch in the room below.*



## STEP THREE

### APPLY SILICONE AROUND THE TOP FACE OF THE TIMBER KERB

Apply the flashing/roof membrane to the sides of the kerb (Leaving the top face as exposed timber) and apply a thick bead of silicone around the top face, closer to the outside edge of the kerb.

You can now place the rooflight onto the kerb and connect it to the power supply, ready to open the rooflight and fix it with the provided long screws. The wiring guides for both control switch and remote controlled variations, can be found at the end of this document.



# ROOF MAKER

WORLD CLASS ROOFLIGHTS

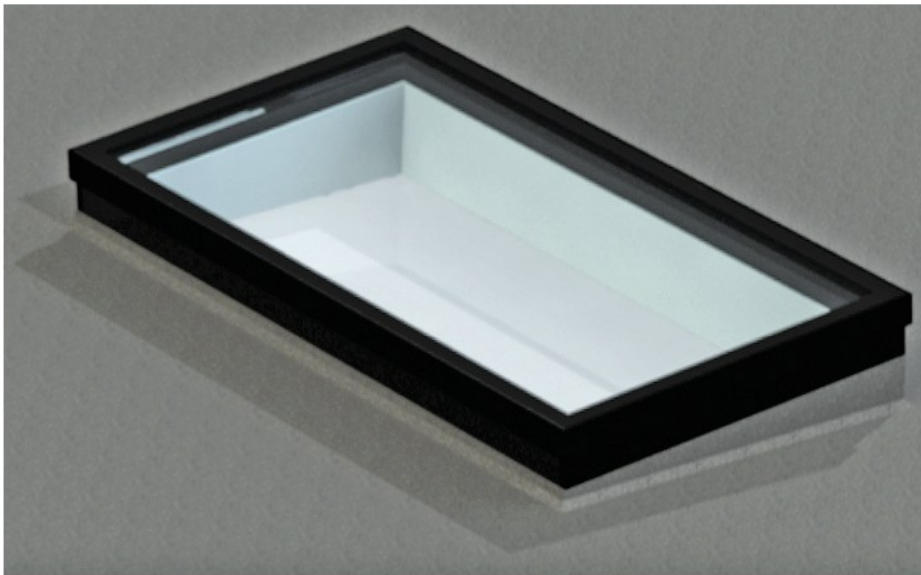
Call us: 0116 269 6297  
Mon-Fri 9-5pm

## STEP FOUR

### SCREW FIX THE ROOFLIGHT TO THE TIMBER KERB

Open the rooflight via the remote control/control switch and secure it to your kerb through the preformed holes in the top of the rooflight's base frame with the long screws\*. For plastering finish guidelines, please follow the roof section fitting guide, on page 7 of this document. Your Hinged Opening Flat Rooflight is now fully installed.

\*Wiring guides for both control switch controlled and remote controlled rooflights can be found on page 8



## REMOTE CONTROLLED ROOFLIGHTS

The Open-Lite Access rooflight will be delivered with a dedicated black control module with input panel and remote for the push rod actuators.

All electrics are plug and play using our synchronisation unit with built in remote control without the need for complicating wiring.



2 x 3000N Push rod actuators with synchronisation unit and remote control + pre-set control programable switch panel.