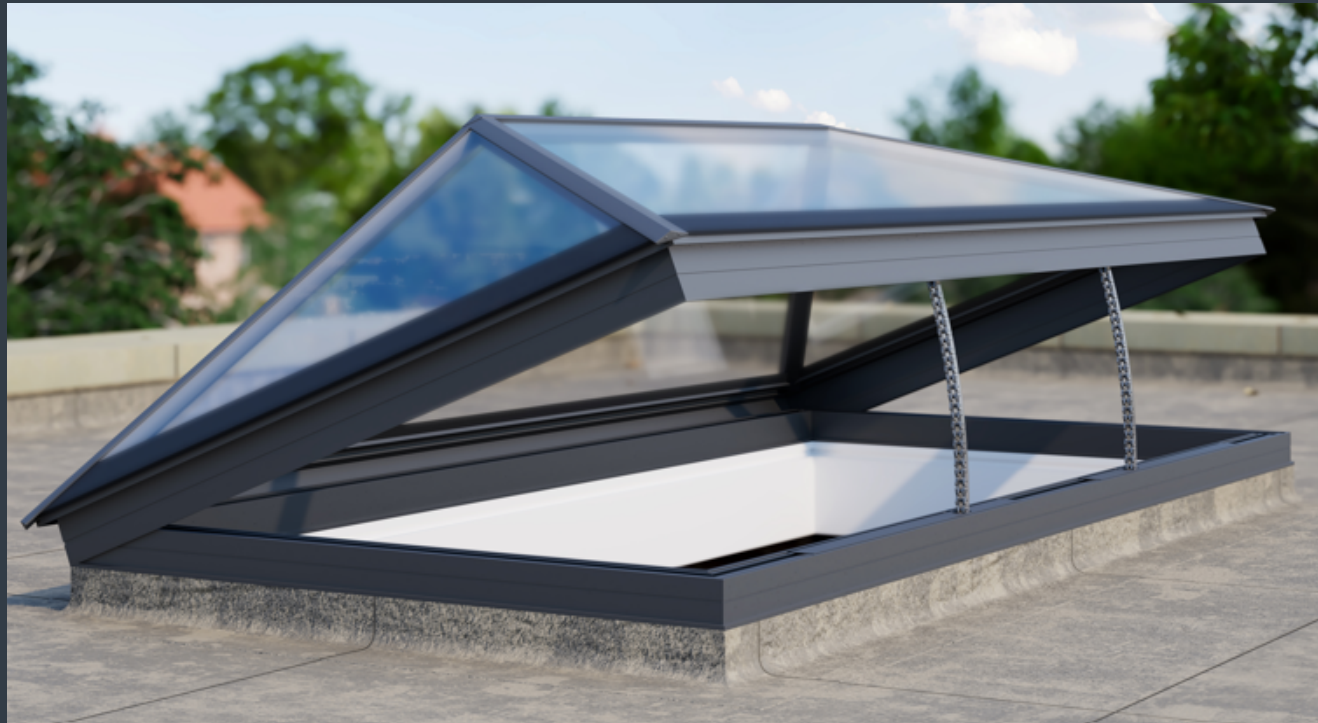


ROOF MAKER

WORLD CLASS ROOFLIGHTS



PRODUCT SPECIFICATION AND INSTALLATION GUIDE

HINGED OPENING SLIMLINE LANTERN

HINGED OPENING SLIMLINE LANTERN: INSTALLATION GUIDE

ON DELIVERY OF YOUR NEW HINGED OPENING SLIMLINE LANTERN, IN ADDITION YOU WILL RECIEVE;

- Your Wall mounted climate control module + 2 machine screws
- 1x White plastic double sized backbox (wall fixings not provided)
- 1x Optional Remote
- 1x Optional Rain sensor*

*You must install rain sensor in location that rainfall will reach it when it rains, preferably away from a wall that might shield it from the rain, should it be raining at an angle. A recommendation would be to use sticky pads to mount it onto the glass near the base of the roof lantern, which will also give it the angle required, as mentioned in the wiring guide.

We also recommend you clean your rain sensor quarterly, so it continues to perform as intended. A soft, damp microfiber cloth should be Sufficient for this.

IN ADDITION TO YOUR NEW HINGED OPENING SLIMLINE LANTERN, YOU WILL NEED;

- Silicone Adhesive Sealant (high quality; Dow Corning 791 recommende
- Drill, bits and screws as required
- Materials to prepare a timber kerb

INSTALLATION GUIDE

Make sure to read through all steps and understand all requirements before beginning assembly. We also recommend that you study the 'cable location guide' which provides further guidance on how to run the rooflight cabling into the property as part of the installation. This is located at the end of this guide, alongside the wiring guide and a roof section diagram.

Please take precaution when moving heavy objects and working at height. Be sure to use the correct equipment. Guide weights based on size, are shown on the chart to the right.

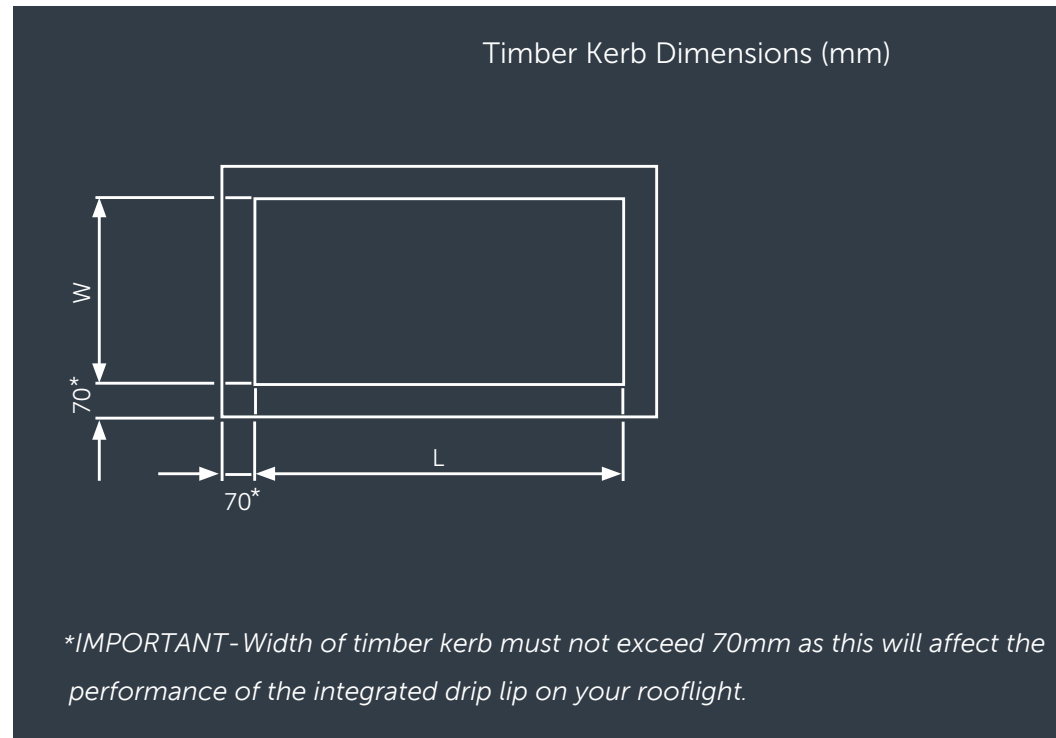


GUIDE WEIGHTS	
Size (mm)	Weight (kg)
1000 x 1000	40
1500 x 1000	64
2000 x 1000	105
2500 x 1000	140

STEP ONE

PREPARE A TIMBER KERB FOR YOUR ROOFLIGHT

Prepare a 70mm width timber kerb for your rooflight. This should be a minimum of 30mm in height from the finished roof level. The internal dimensions of your kerb should match the internal dimensions of the rooflight/size ordered.



ROOF MAKER

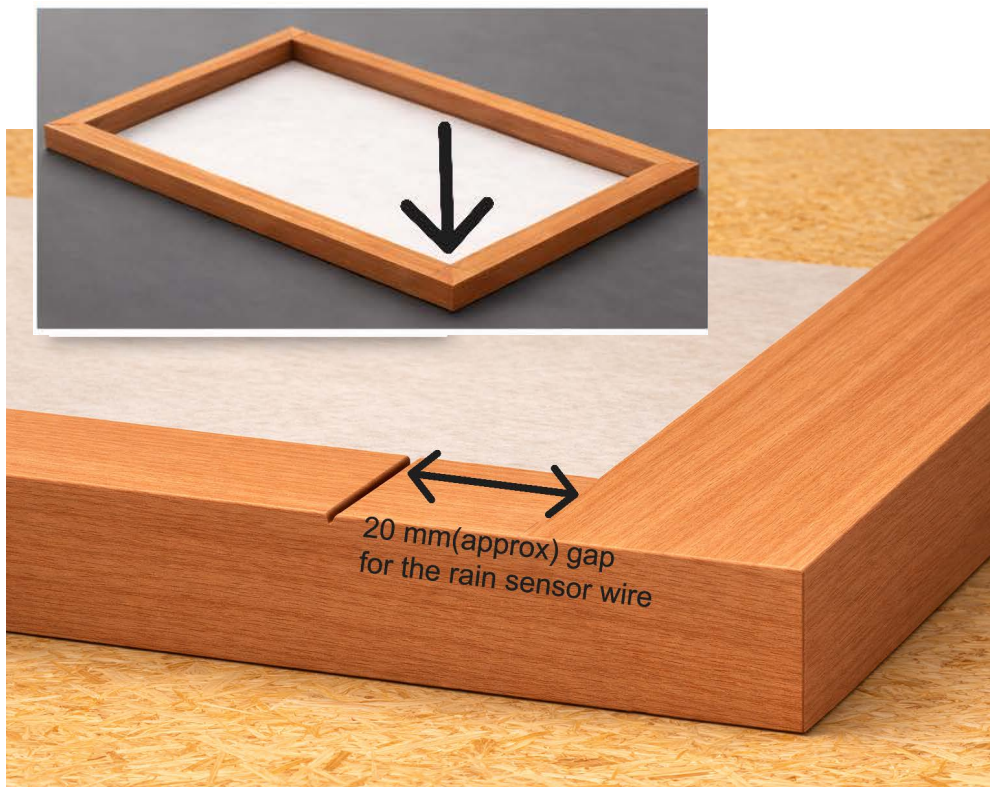
WORLD CLASS ROOFLIGHTS

Call us: 0116 269 6297
Mon-Fri 9-5pm

STEP TWO

RAIN SENSOR (FOR REMOTE CONTROLLED/RAIN SENSOR ROOFLIGHTS ONLY)

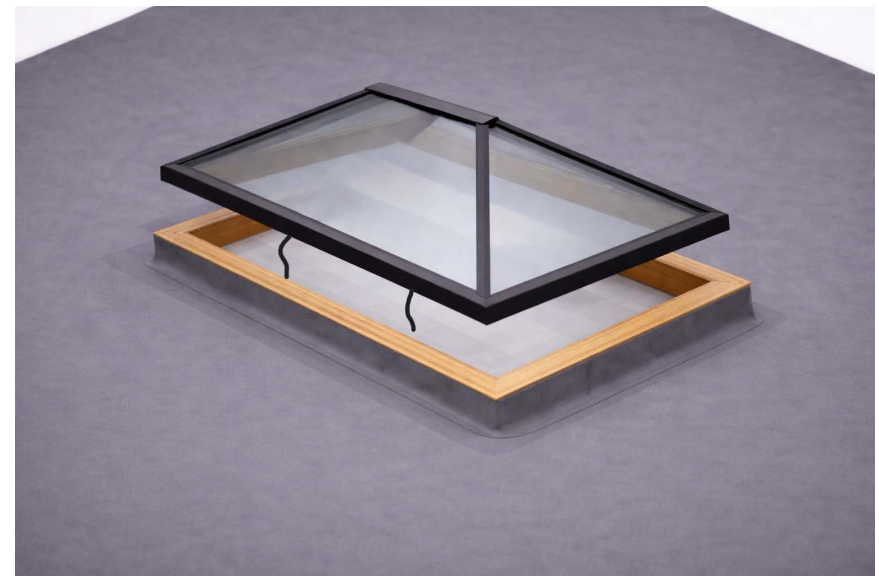
It is advised that a small groove/notch (5mm max depth) is cut kerb in line with where the rain sensor will be positioned. This will allow you to run the wire through for your rain sensor. **The rain sensor is always located at the right hand side as the below diagram shows.**



STEP THREE

CREATE HOLES/GROOVES IN THE TIMBER KERB TO RUN THE ROOFLIGHT CABLING INTO THE PROPERTY

Trial fit your rooflight and mark a suitable location to drill a hole/s or create notches for the rooflight's actuator cables - *Please refer to the cable location guide located on page 5 of this document, if you have opted for the remote controlled/rain sensor option. This gives advice as to where we recommend the control box can be located within the property.* You do not need to refer to this guide if you have a control switch controlled rooflight. For switch controlled rooflights, you will just be extending the actuator cable/s to your chosen location of the control switch in the room below.



ROOF MAKER

WORLD CLASS ROOFLIGHTS

Call us: 0116 269 6297
Mon-Fri 9-5pm

STEP FOUR

APPLY SILICONE AROUND THE TOP FACE OF THE TIMBER KERB

Apply the flashing/roof membrane to the sides of the kerb (Leaving the top face as exposed timber) and apply a thick bead of silicone around the top face, closer to the outside edge of the kerb.

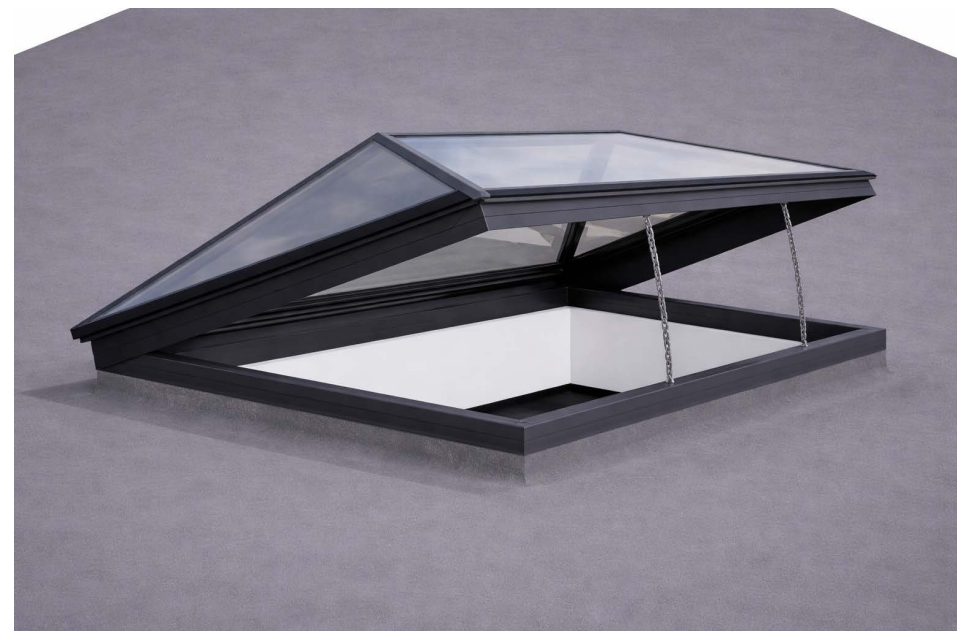
You can now place the rooflight onto the kerb and connect it to the power supply, ready to open the rooflight and fix it with the provided long screws. The wiring guides for both control switch and remote controlled variations, can be found at the end of this document.



STEP FIVE

SCREW FIX THE ROOFLIGHT TO THE TIMBER KERB

Open the rooflight via the remote control switch and secure it to pre drill frame and afix to timber using screw provided. Secure it to the kerb using long screws*. Your Hinged Opening Slimline Lantern is now fully installed.



HINGED OPENING SLIMLINE LANTERN: CROSS SECTION

